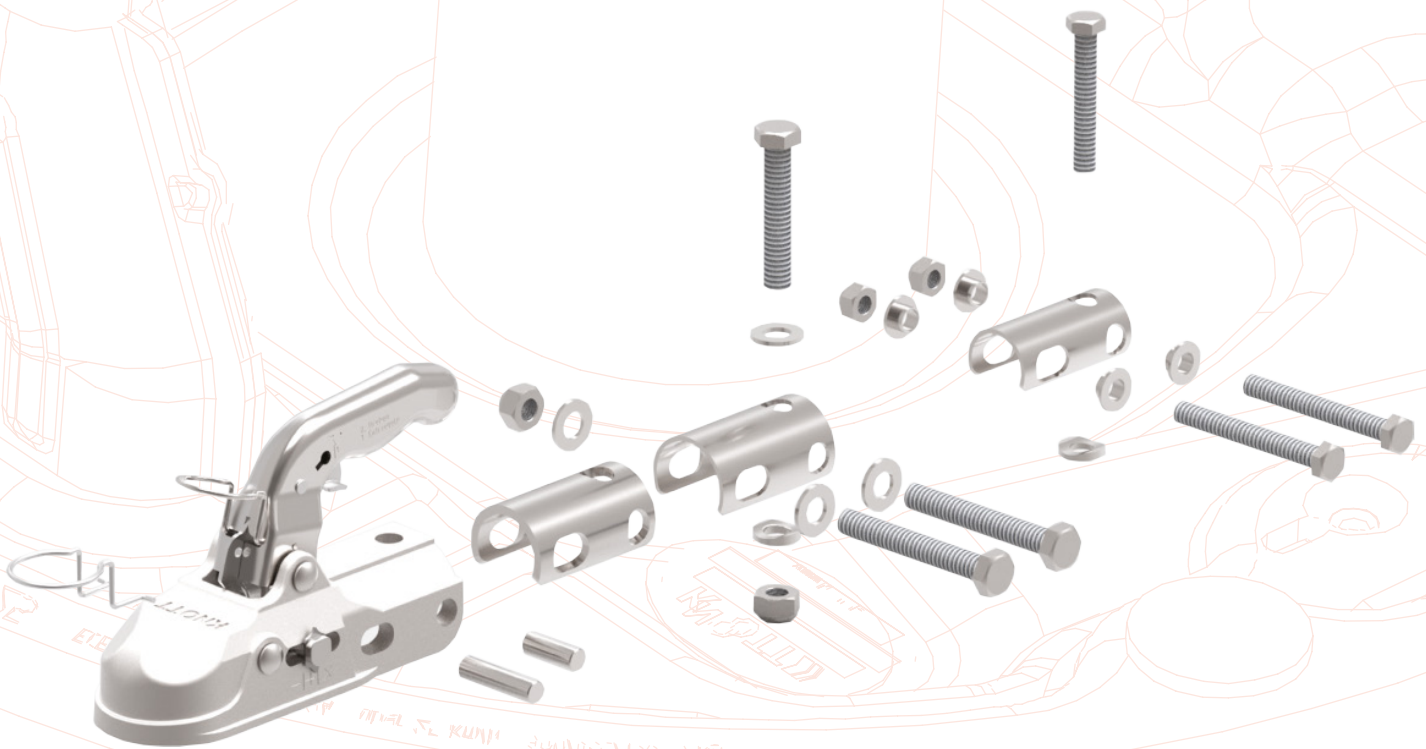




K 30-U UNIVERSAL BALL COUPLING

FITS MOST TRAILERS!



www.autoflex.hu



COUPLING HEAD

www.autoflex.hu



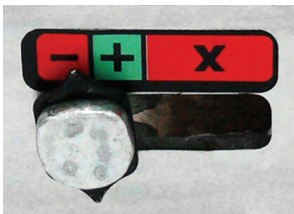


OUR COUPLERS

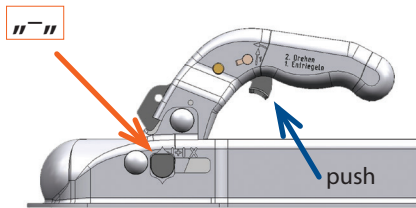
Autoflex-Knott couplers are safe and easy to use

All Knott ball couplers are equipped with safety check indicator. The red-green-red label shows the position of the computer.

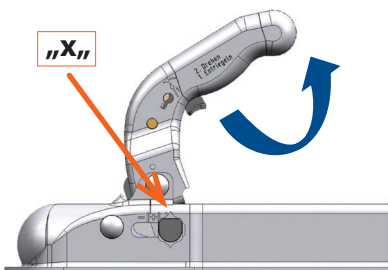
- (red) uncoupled
- + (green) coupled
- x (red) open



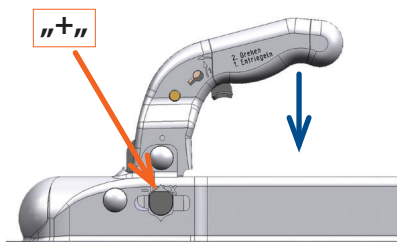
1. Uncoupled (empty)



2. Open



3. Coupled (pushed)



Uncoupling:

Push the trigger and pull the coupling handle upwards. The coupling is now released and will automatically remain open during which the indicator button stays in the red field with the large "X" in it.

Do not drive the trailer in this position!

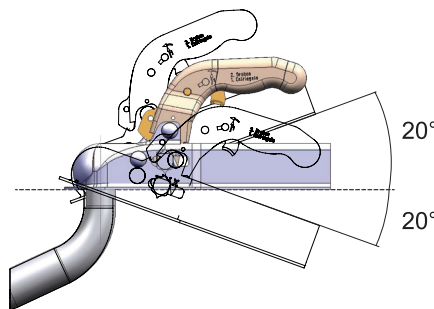
Coupling:

Place the ball coupler (that should be in an open position marked with X) on the top of the hitch-ball of the tow vehicle, which, if applied correctly, produces a short clicking sound. When the ball coupler is adjusted properly, the indicator automatically jumps to the green zone marked with (+).

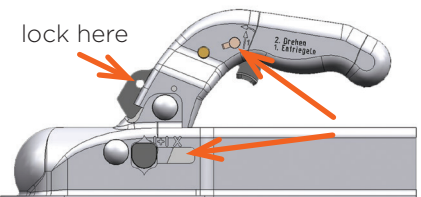
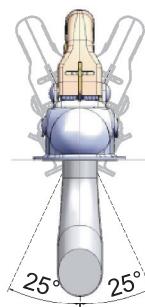
If the indicator is in the red zone marked with (-), the coupling is not applied properly on the tow vehicle. In this case it is prohibited to tow the trailer!

For more information, please read the service book.

The ball coupler's pivot range is max $\pm 25^\circ$ around the vehicle's longitudinal axis. It can swing within a range of $\pm 20^\circ$ on the horizontal plane.



The coupler can be blocked in both disconnected and connected state.



Advantages:

- material steel plate or cast iron
- surface treatment galvanization
- the product went through a 500 hours salt spray test
- comfortable to handle (different types are available)
- easy to use with the trigger
- lockable in both disconnected and connected state
- has a safe construction

Additional parts:

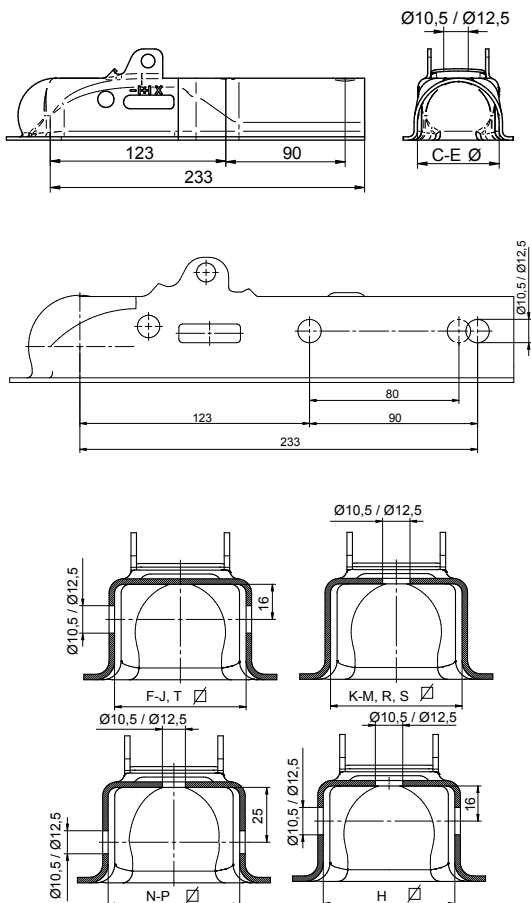
- plug holder
- coupler lock
- protector
- safety ball





K 7,5 Coupling head for ISO/50

Type	Joint size (mm)	ECE number	Art. number
K7.5 CN3	Ø 50 vertical	55R-01 1040	6E0083.023
K7.5 DN3	Ø 60 vertical	55R-01 1040	6E0083.029
K7.5 EN3	Ø 70 vertical	55R-01 1040	6E0083.033
K7.5 FN3	Ø 40 horizontal	55R-01 1040	6E0081.005
K7.5 GN3	Ø 45 horizontal	55R-01 1040	6E0081.013
K7.5 HN3	Ø 50 horizontal	55R-01 1040	6E0081.021
K7.5 IN3	Ø 60 horizontal	55R-01 1040	6E0081.031
K7.5 JN3	Ø 70 horizontal	55R-01 1040	6E0081.037
K7.5 KN3	Ø 50 vertical	55R-01 1040	6E0081.045
K7.5 LN3	Ø 60 vertical	55R-01 1040	6E0081.053
K7.5 MN3	Ø 70 vertical	55R-01 1040	6E0081.061
K7.5 NN3	Ø 50 horizontal / vertical	55R-01 1040	6E0081.072
K7.5 ON3	Ø 60 horizontal / vertical	55R-01 1040	6E0081.080
K7.5 PN3	Ø 70 horizontal / vertical	55R-01 1040	6E0081.088
K7.5 RN3	Ø 45 vertical	55R-01 1040	6E0081.090
K7.5 SN3	Ø 40 vertical	55R-01 1040	6E0081.091



Max. load capacity: 750 kg
D-value: 7,2 kN
Vert. load capacity: 75 kg
Material: steel

