

HUBS

All of our wheel hubs are also available in water-resistant version.

Surface treatment: e-coating

Bearing : Compact roller bearing or tapered roller bearing

The advantages of compact roller bearings over taper roller bearings and ball bearings:

- These bearings can accommodate axial loads in both directions, as well as radial loads,
- Available in stainless & waterproof version, or in waterproof version only,
- Sealed unit which is highly dirt resistant,
- Maintenance free,
- Equipped with sealed -for -life bearing to ensure extended usage time.

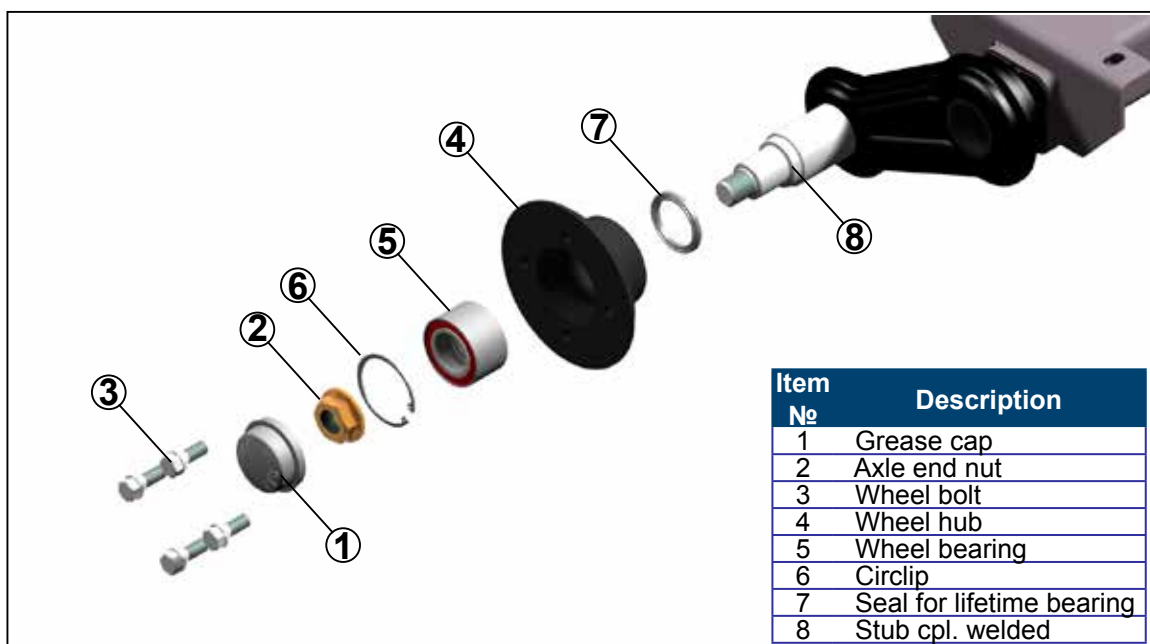


Oil lubricated hub

- Advantages:
- water resistant
 - transparent dustcap
 - easy to refill



SPARE PARTS FOR NON BRAKED RUBBER SUSPENSION AXLES

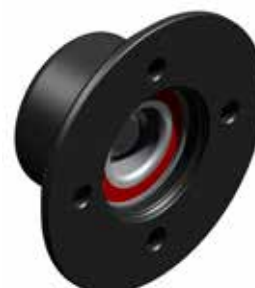


VARIETY OF UNBRAKED WHEEL HUBS

Axle load capacity up to 750 kg



FNK22



Type	Offset (mm)	Drawing number
FNK22	0 - 45	6A7741
FNK23	0 - 45	6A7861

All wheel hub are available in water-resistant version too.

Wheel connection	Hub
98×4	FNK22, FNK12
100×4	FNK22, FNK12, FNK13
100×5	FNK23, FNK12
108×4	FNK22, FNK12, FNK13
110×4	FNK23, FNK12, FNK6
110×5	FNK12, FNK6
112×5	FNK12, FNK13, FNK6
112×3	FNK12, FNK13, FNK6
114,3×5	FNK12, FNK13, FNK6
115×4	FNK23, FNK13, FNK6
120×5	FNK13, FNK8
120×6	FNK13, FNK8
130×4	FNK23, FNK13, FNK14, FNK8
130×5	FNK13, FNK14, FNK8
130×6	FNK13, FNK14, FNK8
139,7×4	FNK23, FNK13, FNK14, FNK8
139,7×5	FNK13, FNK14, FNK8
139,7×6	FNK13, FNK14, FNK8
140×5	FNK13, FNK14, FNK8
140×6	FNK13, FNK14, FNK8
150×3	FNK14, FNK8
150×5	FNK14, FNK8
152,4×5	FNK14, FNK8
160×5	FNK14, FNK8
165,1×5	FNK14, FNK8
170×5	FNK14, FNK8



FNK23

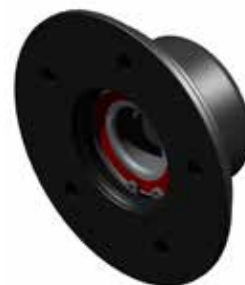


VARIETY OF UNBRAKED WHEEL HUBS

Axle load capacity up to 1350 kg



FNK12



FNK13



Type	Offset (mm)	Drawing number
FNK12	25 - 35	6B1302
FNK13	25 - 35	6B1303
FNK14	25 - 35	6B1383



FNK14



Axle load capacity up to 1800 kg

FNK6



Type	Offset	Drawing number
FNK6	up to 1500 kg 0-35 over 1500 kg 25-35	6B0724
FNK6W	up to 1500 kg 0-35 over 1500 kg 25-35	6B0724
FNK8	up to 1500 kg 0-35 over 1500 kg 25-35	6B0800
FNK8W	up to 1500 kg 0-35 over 1500 kg 25-35	6B0800



FNK8



Dear Sirs,

A characteristic feature of our products is to adapt them to the constantly changing needs of the customer, whilst offering innovative solutions for increased comfort and safety. Therefore, we have decided to introduce a new type of cap for the axle hub.



Its attribute is the groove which allows the insertion of a wheel reflector improving visibility at night. It also worth mentioning that:

- zinc plated is resistant to weather conditions,
- is an effective thread shield,
- available in two sizes: Ø 52 mm and Ø 64 mm.



Name	Size (Ø mm)	Art. number
Cap	52	418661.001
Cap	64	418660.001

For more details please contact KNOTT Sales Department.

© KNOTT MARKETING KPL

KNOTT BRAKES

All of our braked axles are fitted with Knott brakes. These are high quality brakes that have been market leaders for over 70 years. The new generation of brakes includes an “automatic adjustment” feature that will need no maintenance. Please indicate in your order whether you would like to get your axle with a self-adjusting brake.

We offer for our trailer customers:

- Mechanical drum brakes,
- Hydraulic drum brakes,
- Hydraulic disc brakes (innovation),
- Electric brakes.



Brake systems comparison:

Types:	Mechanical Drum Brake	Hydraulic Drum Brake	Hydraulic Disc Brake	Electric Drum Brake
Advantages:	Serial product (lower price level) Automatic reversing, Automatic adjustment possible, Compact Easy installation	Precise, Long lifetime	Maintenance free, Better braking quality, Long lifetime, Automatic adjustment	simple construction, automatic reversing rigid drawbar (cheaper)
Supplementary	Overrun device, brake cables, balance	Hydraulic overrun device, hydraulic cables, brake cables, balance	Hydraulic overrun device, electronic reversing control hydraulic cables, brake cables, balance	Coupling, brake cables, balance
Max load capacity	900 kg	900 kg	900 Kg	900 kg
Bearing	lifetime compact ball bearing, taper roller bearing	compact bearing	compact bearing or taper roller bearing	taper roller bearing
Surface treatment	e-coated	e-coated	powder painted	e-coated
Water resistant	possible	possible	yes	possible
Status	serial product	serial product	new product	in development

VARIETY OF MECHANICAL DRUM BRAKES

Type	Brake drum	Brake shoe width (mm)	Permissible mass G_{80} (kg)	Brake Torque M_{max} (Nm)	Tyre Ø (m)		ECE number
16-1365	F160	35	500	1050	min.	max.	361-0035-97
20-2425/1	F200	50	750	1700	0.506	0.720	361-006-94
25-2025	F250	40	900	2000	0.506	0.720	361-007-94
30- 2261	F300	60	1500	6500	0.660	0.900	361-1076-97

F160



F200



Type	Offset (mm)	Drawing number
F160	0 - 45	6A0113
F160W	0 - 45	6A2263
F200	0 - 45	6A1121
F200W	0 - 45	6A2265
F200ET0	(-5) - 35	6A1303
F200ET0W	(-5) - 35	6A2578



F200ET0



VARIETY OF MECHANICAL DRUM BRAKES



F250



F250ET0



F300



Wheel connection	Brake
98×4	F160
100×4	F160
100×5	F200
108×4	F160, F200
110×4	F200
110×5	F200
112×5	F200, F250
112×3	F200, F250
114,3×5	F200, F250
115×4	F200, F250
120×5	F200, F250
120×6	F200, F250
130×4	F200, F250
130×5	F200, F250
130×6	F200, F250
139,7×4	F200, F250
139,7×5	F200, F250
139,7×6	F200, F250
140×5	F200, F250
140×6	F200, F250
150×3	F250
150×5	F250
152,4×5	F250
160×5	F250
165,1×5	F250
205×6	F300
205×5	F300

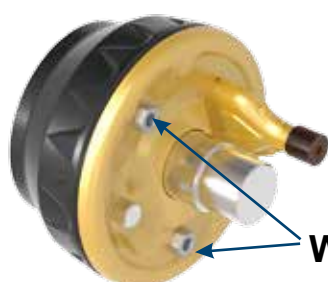
Type	Offset (mm)	Drawing number
F250	0 - 45	6A0428
F250W	0 - 45	6A2327
F250ET10	0 - 10	6B7714
F300	0 - 45	6A2548

Washing nozzle for waterproof drum brakes

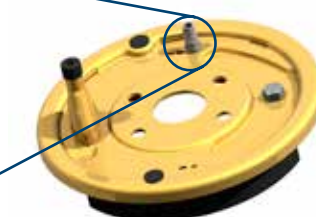
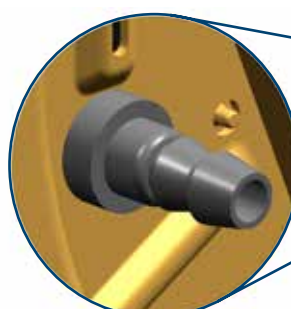
Use the washing nozzle for longer life time. It cleans the drum from inside, so the brake shoe and spring remain clean.

How to use:

Plug the hose to the nozzle and turn on the water. The salt water and dirt will flow out.

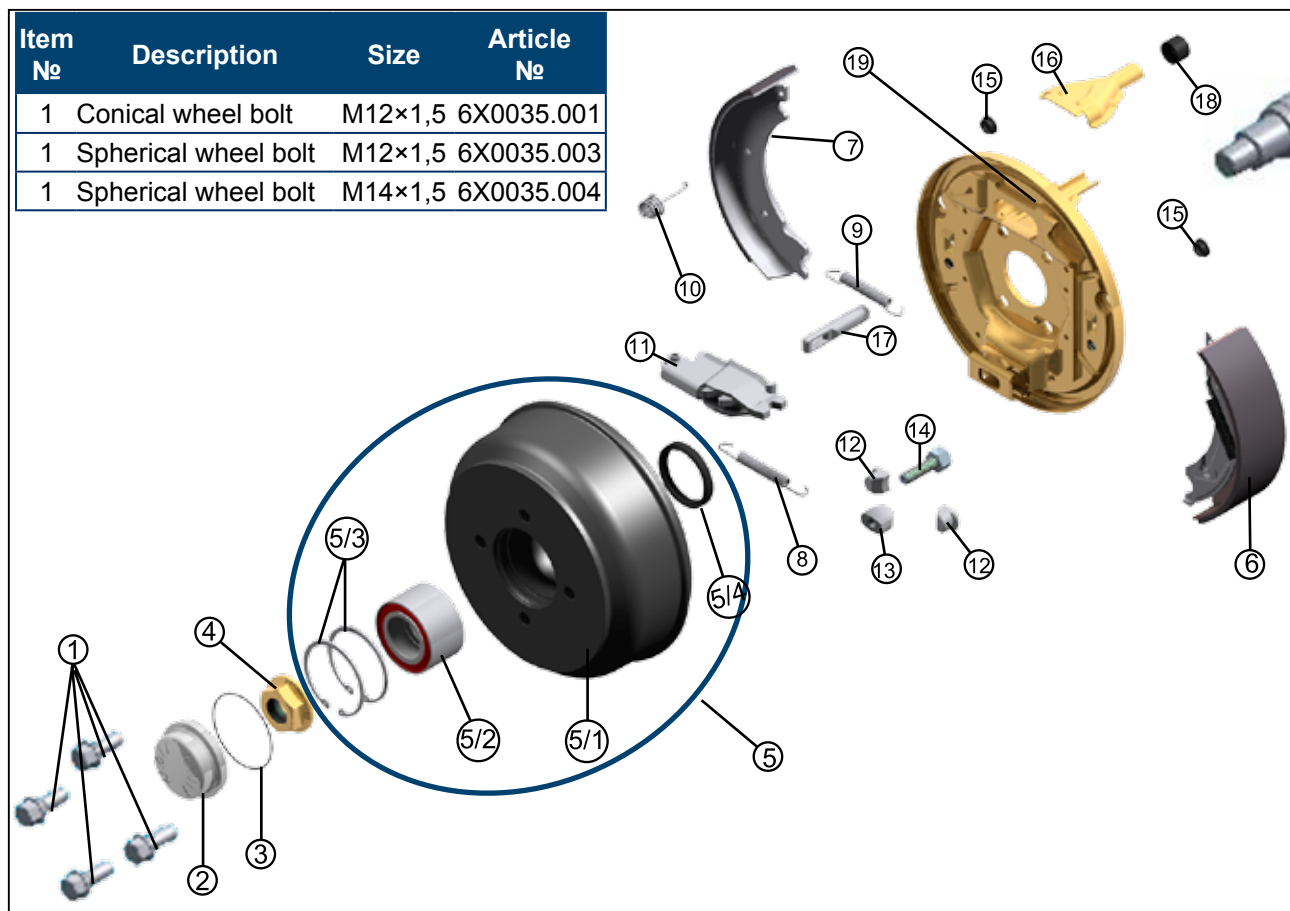


Washing nuts



Washing nozzle

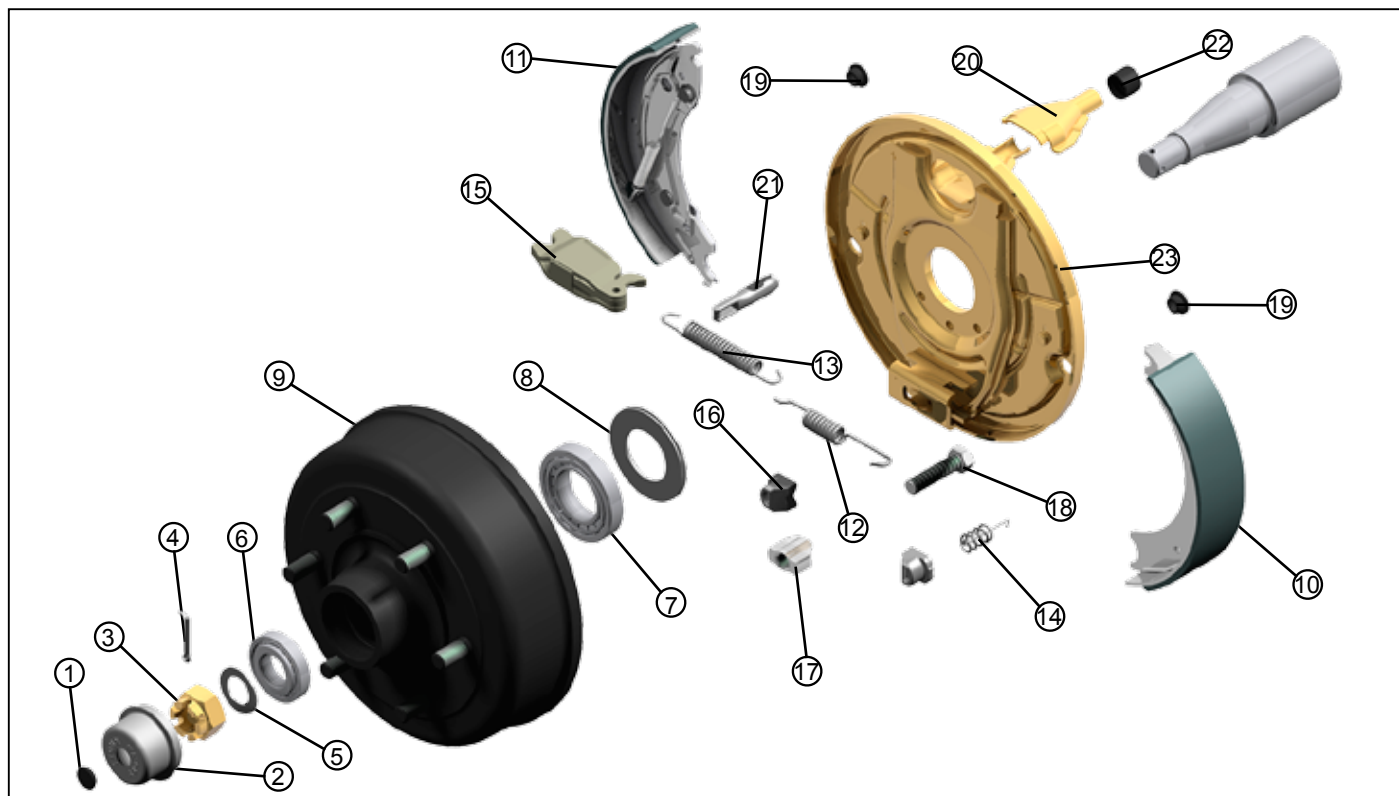
SPARE PARTS FOR WHEEL BRAKE (with compact bearing)



Item No	Description	Article number			
		F160	F200	F200ET0	F250
1	Conical wheel bolt	6X0035.001	6X0035.001	6X0035.001	6X0035.001
2	Dust cap	6B1832C002	6B1832C002	6B1831C002	6B1831C002
3	O-ring	6X0034.001	6X0034.001	6X0034.003	6X0034.003
4	Flanged nut	6B0053.001	6B0053.001	6B0053.001	6B0053.001
5	Brake drum kit incl. 5/1 - 5/4	6A2266	6A2265	6A2582	6B0046
5/1	Brake drum	6A2266	6A2267	6A2582	6B0046
5/2	Compact bearing	6X0500.009	6X0500.009	6X0500.007	6X0500.007
5/3	Circlip	6X0472.054	6X0472.054	6X0472.059	6X0472.059
5/4	Simmering	6S0063.001	6S0063.001	6S0064.001	6S0064.001
6	Brake shoe (Backmat) (reversing)	6X0023.001	6X0023.002	6X0023.002	6X0023.006
7	Brake shoe (normal)	6X0022.001	6X0022.002	6X0022.002	6X0022.006
8	Tension spring (lower)	6X0024.001	6X0644.001	6X0644.001	6X0024.003
9	Tension spring (upper)	6X0024.001	6X0644.003	6X0644.003	6X0024.004
10	Compression spring	6X0098.001	6X0644.002	6X0644.002	6X0098.001
11	Complete expander	6X0107.001	6X0107.002	6X0107.002	6X0107.002
12	Adjustment shoe posts	6X0036.001	6X0036.001	6X0036.001	6X0036.002
13	Readjustment wedge	6X0099.001	6X0099.001	6X0099.001	6X0099.002
14	Hexagonal head screw	6X0759.001	6X0759.001	6X0759.001	6X0759.002
15	Releasing cap	6X0866.001	6X0866.001	6X0866.001	6X0866.002
16	Half Shell	6X0046.005	6X0046.005	6X0046.005	6X0046.005
17	Eyelet	6X0041.001	6X0041.001	6X0041.001	6X0041.001
18	Protective sleeve	6X0046.001	6X0046.001	6X0046.001	6X0046.001
19	Brake backplate (left)	6X0083.002	6X0086.003	6X0086.003	6X0679.001
19	Brake backplate (right)	6X0083.001	6X0086.004	6X0086.004	6X0679.002



SPARE PARTS FOR WHEEL BRAKE (with taper roller bearing)



Item №	Description	Article number	
		F250ET10	F300
1	Protective plug	---	6B5663.001
2	Dust cap	6B1831C024	6B3446.001
3	Flanged nut	6X0935.019	6X0935.018
4	Cotter pin	6X0094.038	6X0094.050
5	Steel washer	---	6X0032.004
6	Conical bearing	6X0500.011	6X0500.064
7	Conical bearing	6X0500.064	6X0500.065
8	Dust protector ring	41562	6X0927.002
9	Brake drum kit	6B7714	6A2137
10	Brake shoe (normal)	6X0023.002	6X0023.004
11	Brake shoe (Backmat) (reversing)	6X0022.002	6X0022.004
12	Tension spring (lower)	6X0024.003	6X0644.006
13	Tension spring (upper)	6X0024.004	6X0644.007
14	Compression spring	6X0098.001	6X0098.001
15	Complete expander	6X0107.002	6X0107.002
16	Adjustment shoe posts	6X0036.002	6X0036.002
17	Readjustment wedge	6X0099.002	6X0099.002
18	Hexagonal head screw	6X0759.002	
19	Releasing cap		
20	Half Shell	6X0046.005	6X0046.005
21	Eyelet	6X0041.001	6X0041.001
22	Protective sleeve	6X0769.018	6X0679.001
23	Brake backplate (left)	6X0679.004	6X1081.002
23	Brake backplate (right)	6X0679.005	6X1081.001