

VARIETY OF SWING ARMS

Rolled steel swing arm
with square tube axle stub



Axle load max. 500 kg

Bended steel swing arm
with square tube axle stub



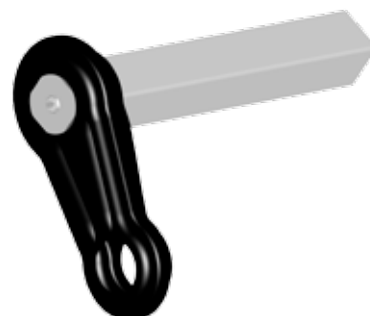
Axle load max. 750 kg



Pressed steel swing arm
with square tube axle stub



Axle load max. 1800 kg



Pressed steel swing arm
with square bar axle stub

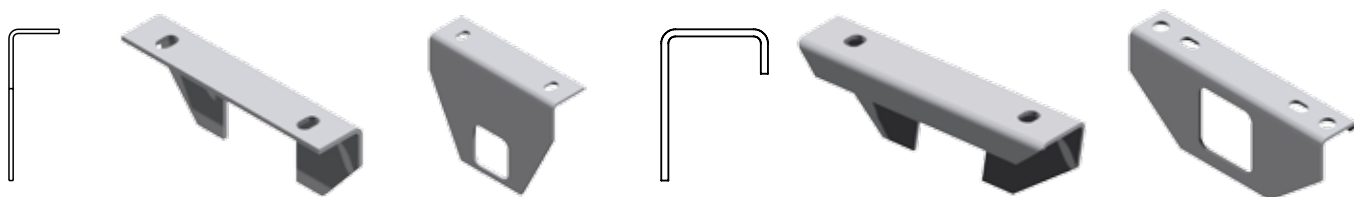


Forged steel swing arm
with square tube axle stub

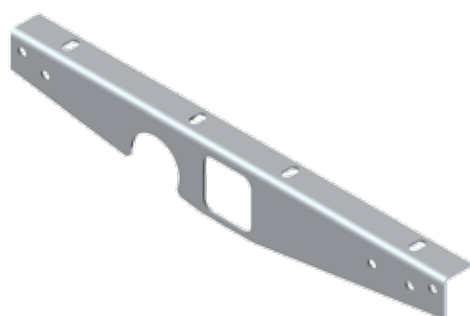
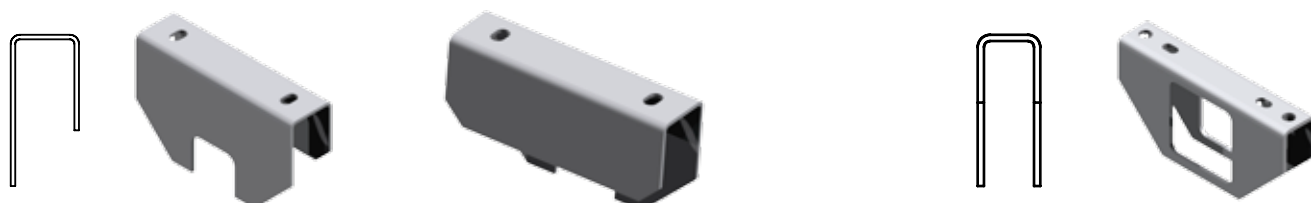


Forged steel swing arm
with square bar axle stub

VARIETY OF MOUNTING BRACKET STYLES



These brackets are just a part of our complete range.



Long mounting brackets

Material: steel plate

Surface treatment: hot dip galvanized

Mounting possibility to chassis with bolt

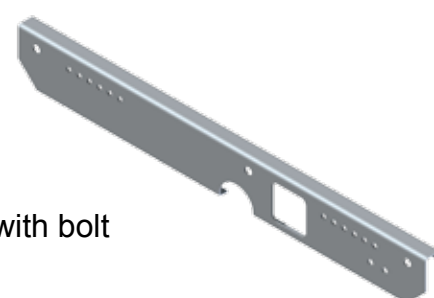
Use for: fixing axle to chassis

Material: steel plate

Surface treatment: hot dip galvanized

Mounting possibility to chassis with bolt

For boat trailers



For tandem axle trailers



For more types please contact our sales person!

HUBS

All of our wheel hubs are also available in water-resistant version.

Surface treatment: e-coating

Bearing : Compact roller bearing or tapered roller bearing

The advantages of compact roller bearings over taper roller bearings and ball bearings:

- These bearings can accommodate axial loads in both directions, as well as radial loads,
- Available in stainless & waterproof version, or in waterproof version only,
- Sealed unit which is highly dirt resistant,
- Maintenance free,
- Equipped with sealed -for -life bearing to ensure extended usage time.

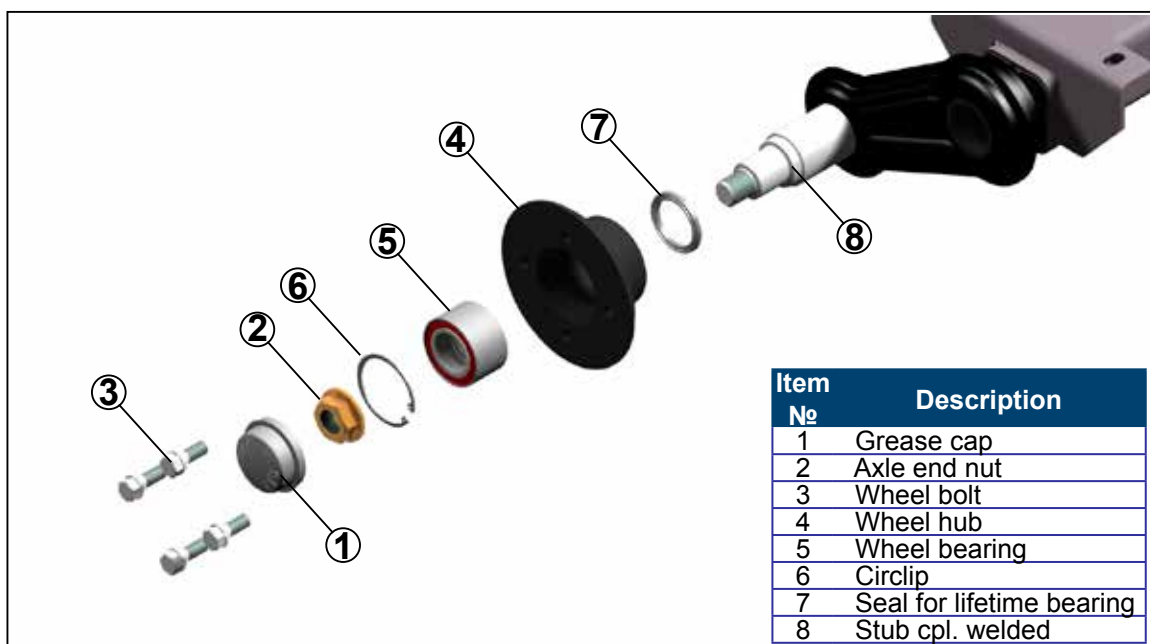


Oil lubricated hub

- Advantages:
- water resistant
 - transparent dustcap
 - easy to refill



SPARE PARTS FOR NON BRAKED RUBBER SUSPENSION AXLES



VARIETY OF UNBRAKED WHEEL HUBS

Axle load capacity up to 750 kg



FNK22



Type	Offset (mm)	Drawing number
FNK22	0 - 45	6A7741
FNK23	0 - 45	6A7861

All wheel hub are available in water-resistant version too.

Wheel connection	Hub
98×4	FNK22, FNK12
100×4	FNK22, FNK12, FNK13
100×5	FNK23, FNK12
108×4	FNK22, FNK12, FNK13
110×4	FNK23, FNK12, FNK6
110×5	FNK12, FNK6
112×5	FNK12, FNK13, FNK6
112×3	FNK12, FNK13, FNK6
114,3×5	FNK12, FNK13, FNK6
115×4	FNK23, FNK13, FNK6
120×5	FNK13, FNK8
120×6	FNK13, FNK8
130×4	FNK23, FNK13, FNK14, FNK8
130×5	FNK13, FNK14, FNK8
130×6	FNK13, FNK14, FNK8
139,7×4	FNK23, FNK13, FNK14, FNK8
139,7×5	FNK13, FNK14, FNK8
139,7×6	FNK13, FNK14, FNK8
140×5	FNK13, FNK14, FNK8
140×6	FNK13, FNK14, FNK8
150×3	FNK14, FNK8
150×5	FNK14, FNK8
152,4×5	FNK14, FNK8
160×5	FNK14, FNK8
165,1×5	FNK14, FNK8
170×5	FNK14, FNK8



FNK23

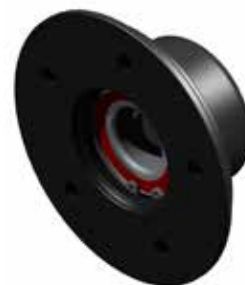


VARIETY OF UNBRAKED WHEEL HUBS

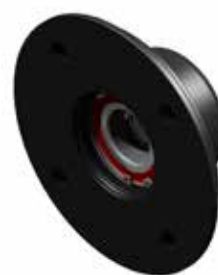
Axle load capacity up to 1350 kg



FNK12



FNK13



Type	Offset (mm)	Drawing number
FNK12	25 - 35	6B1302
FNK13	25 - 35	6B1303
FNK14	25 - 35	6B1383



FNK14



Axle load capacity up to 1800 kg

FNK6



Type	Offset	Drawing number
FNK6	up to 1500 kg 0-35 over 1500 kg 25-35	6B0724
FNK6W	up to 1500 kg 0-35 over 1500 kg 25-35	6B0724
FNK8	up to 1500 kg 0-35 over 1500 kg 25-35	6B0800
FNK8W	up to 1500 kg 0-35 over 1500 kg 25-35	6B0800



FNK8



UNBRAKED RUBBER SUSPENSION AXLE

Load capacity up to 1350 kg

The product can be used for:

- jet skis
- snow-mobiles
- dog trailers
- utility trailers such as generators
- boats
- utility vehicles
- horse trailers.

Standard surface treatment:
hot dip galvanization

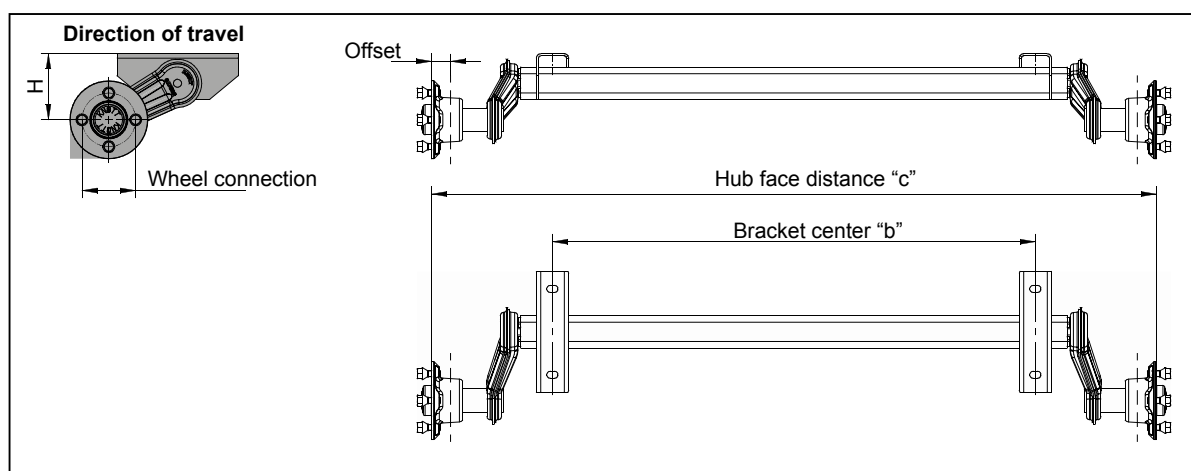
Load capacity:
350 kg - 1350 kg

Bearing type:

- lifetime compact ball bearing,
- taper roller bearing

The product package includes:

- rubber torsion axle and type plate
- hub
- swing arm



If you are interested in our product, please give the following parameters
to our sales personnel to enable us to choose the best version for you suited to your needs:

- H, c, b size, load capacity, wheel connection and offset

UNBRAKED RUBBER SUSPENSION BENDED AXLE

Load capacity up to 800 kg

The product can be used for :
boat trailers

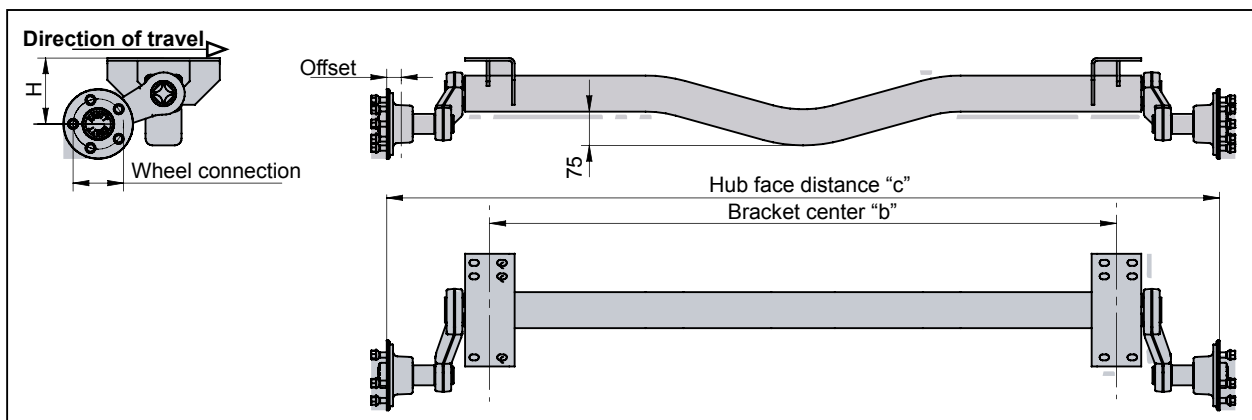
Surface treatment:
hot-dip galvanization

Load capacity: 350 - 800 kg
Bearing type: lifetime compact ball bearing,
taper roller bearing



Advantages:

The new design allows an easier transportation of boats and other vehicles.
The lower centre of gravity makes it more stable.



If you are interested in our product, please give the following parameters
to our sales personnel to enable us to choose the best version for you suited to your needs:

- H, c, b size,
- Load capacity,
- Wheel connection,
- Offset

Method	Symbol	Salt spray testing result (h)
Powder Coating	P	300 h
Galvanization	G	> 500 h
Galvanization & powder coating	G&P	700 h
E-coating	E	> 800 h
Hot dip galvanization	HG	> 1000 h
E-coating & powder coating	E&P	> 1000 h

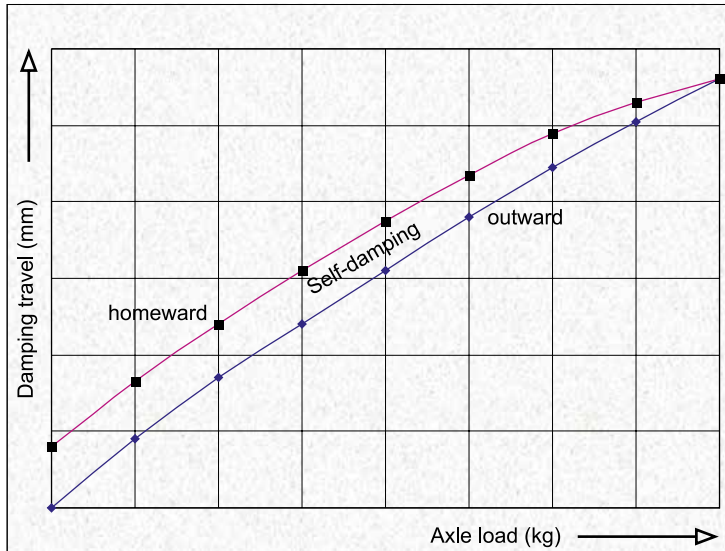




European Quality Trailer Axles

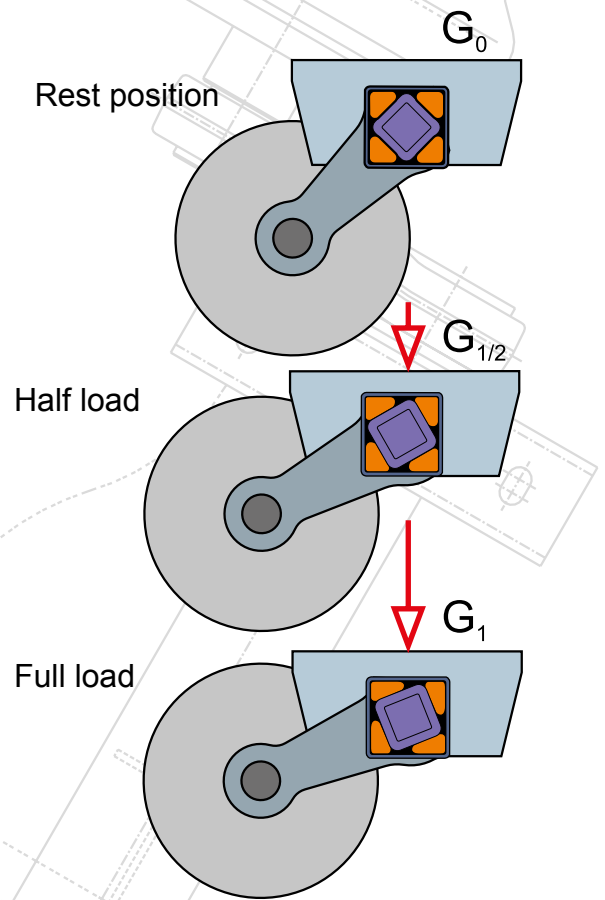
RUBBER TORSION AXLES

Suspension diagram



Advantages of using 4 pieces torsion rubbers of 90degrees:

- correct guideline
- stable underpinning
- inner self-damping
- precisely adjustable spring power



Comparison of suspension systems

Type:	4 Rubber torsion axle	Spiral Spring	Solid axle with Leaf Spring	Steel torsion axle	Rubber torsion axle
Advantages:	easy mounting; correct guideline; stable underpinning; inner self-damping	Maximum suspension comfort	less temperature dependent; easy mounting; big load capacity.	less temperature dependent; easy mounting; big load capacity	good suspension comfort; precise handling; maintenance free;
Contains:	square tube, inner tube, 4 rubber cords	spiral spring suspension	leaf spring	axle	axle
Axle type:	Rubber torsion axle	No axle	Rigid axle	steel torsion axle	rubber torsion axle
Need of shock absorber	possible, but not necessary	Yes	Yes	possible, but not necessary	possible, but not necessary
Usability	for all kind of trailer	for sensible goods and animals	in harsh environments	in harsh environments even for sensible goods	for sensible and valuable goods and animals



AXLE ORDER FORM

Company name/Contact person: _____

Address: _____

VAT number (in case this is the first contact with Autóflex-Knott Kft.): _____

E-mail or Phone number: _____

Axle type:

☐ unbraked

☐ braked

☐ rubber suspension

☐ spiral spring

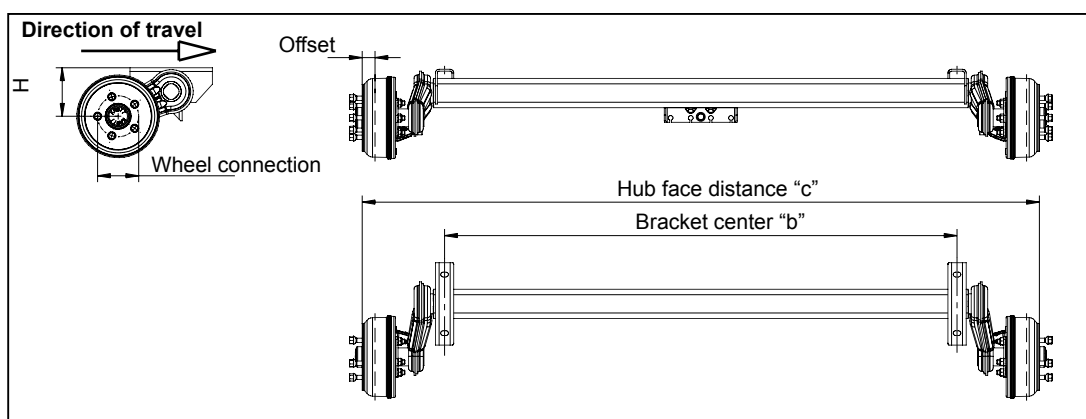
☐ rigid (solid)

☐ normal

☐ cranked (bended)

Shock absorber: ☐ yes

☐ no



Please give the following data:

Load capacity (kg): _____

"H" mounting size (mm): _____

"c" size (mm): _____

"b" size (mm): _____

Offset: _____

Wheel connection: _____

If you need a special bracket please give us the measurements.

If you have a chassis or axle drawing, please send it for us to give you the best axle version.

**Please give the parameters above to our sales personnel
to enable us to choose the best variant for you suited to your needs.**

Dear Sirs,

A characteristic feature of our products is to adapt them to the constantly changing needs of the customer, whilst offering innovative solutions for increased comfort and safety. Therefore, we have decided to introduce a new type of cap for the axle hub.



Its attribute is the groove which allows the insertion of a wheel reflector improving visibility at night. It also worth mentioning that:

- zinc plated is resistant to weather conditions,
- is an effective thread shield,
- available in two sizes: Ø 52 mm and Ø 64 mm.



Name	Size (Ø mm)	Art. number
Cap	52	418661.001
Cap	64	418660.001

For more details please contact KNOTT Sales Department.

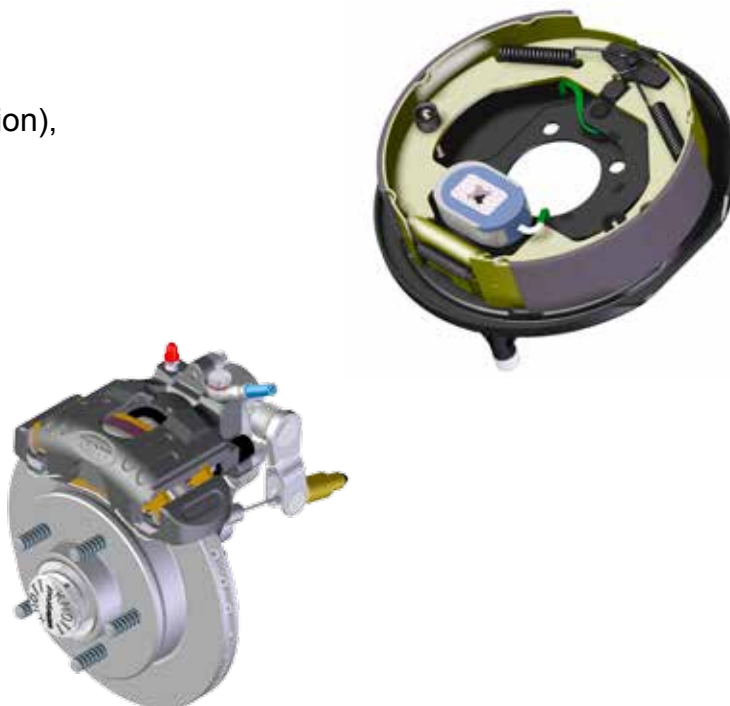
© KNOTT MARKETING KPL

KNOTT BRAKES

All of our braked axles are fitted with Knott brakes. These are high quality brakes that have been market leaders for over 70 years. The new generation of brakes includes an “automatic adjustment” feature that will need no maintenance. Please indicate in your order whether you would like to get your axle with a self-adjusting brake.

We offer for our trailer customers:

- Mechanical drum brakes,
- Hydraulic drum brakes,
- Hydraulic disc brakes (innovation),
- Electric brakes.



Brake systems comparison:

Types:	Mechanical Drum Brake	Hydraulic Drum Brake	Hydraulic Disc Brake	Electric Drum Brake
Advantages:	Serial product (lower price level) Automatic reversing, Automatic adjustment possible, Compact Easy installation	Precise, Long lifetime	Maintenance free, Better braking quality, Long lifetime, Automatic adjustment	simple construction, automatic reversing rigid drawbar (cheaper)
Supplementary	Overrun device, brake cables, balance	Hydraulic overrun device, hydraulic cables, brake cables, balance	Hydraulic overrun device, electronic reversing control hydraulic cables, brake cables, balance	Coupling, brake cables, balance
Max load capacity	900 kg	900 kg	900 Kg	900 kg
Bearing	lifetime compact ball bearing, taper roller bearing	compact bearing	compact bearing or taper roller bearing	taper roller bearing
Surface treatment	e-coated	e-coated	powder painted	e-coated
Water resistant	possible	possible	yes	possible
Status	serial product	serial product	new product	in development

VARIETY OF MECHANICAL DRUM BRAKES

Type	Brake drum	Brake shoe width (mm)	Permissible mass G_{80} (kg)	Brake Torque M_{max} (Nm)	Tyre Ø (m)		ECE number
16-1365	F160	35	500	1050	min.	max.	361-0035-97
20-2425/1	F200	50	750	1700	0.506	0.720	361-006-94
25-2025	F250	40	900	2000	0.506	0.720	361-007-94
30- 2261	F300	60	1500	6500	0.660	0.900	361-1076-97

F160



F200



Type	Offset (mm)	Drawing number
F160	0 - 45	6A0113
F160W	0 - 45	6A2263
F200	0 - 45	6A1121
F200W	0 - 45	6A2265
F200ET0	(-5) - 35	6A1303
F200ET0W	(-5) - 35	6A2578



F200ET0



VARIETY OF MECHANICAL DRUM BRAKES



F250



F250ET0



F300



Wheel connection	Brake
98×4	F160
100×4	F160
100×5	F200
108×4	F160, F200
110×4	F200
110×5	F200
112×5	F200, F250
112×3	F200, F250
114,3×5	F200, F250
115×4	F200, F250
120×5	F200, F250
120×6	F200, F250
130×4	F200, F250
130×5	F200, F250
130×6	F200, F250
139,7×4	F200, F250
139,7×5	F200, F250
139,7×6	F200, F250
140×5	F200, F250
140×6	F200, F250
150×3	F250
150×5	F250
152,4×5	F250
160×5	F250
165,1×5	F250
205×6	F300
205×5	F300

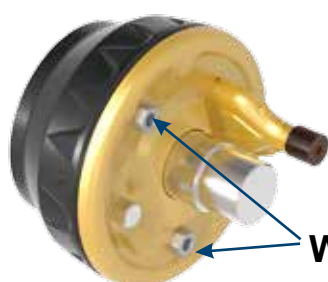
Type	Offset (mm)	Drawing number
F250	0 - 45	6A0428
F250W	0 - 45	6A2327
F250ET10	0 - 10	6B7714
F300	0 - 45	6A2548

Washing nozzle for waterproof drum brakes

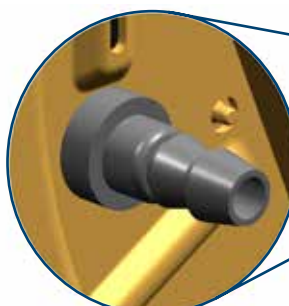
Use the washing nozzle for longer life time. It cleans the drum from inside, so the brake shoe and spring remain clean.

How to use:

Plug the hose to the nozzle and turn on the water. The salt water and dirt will flow out.

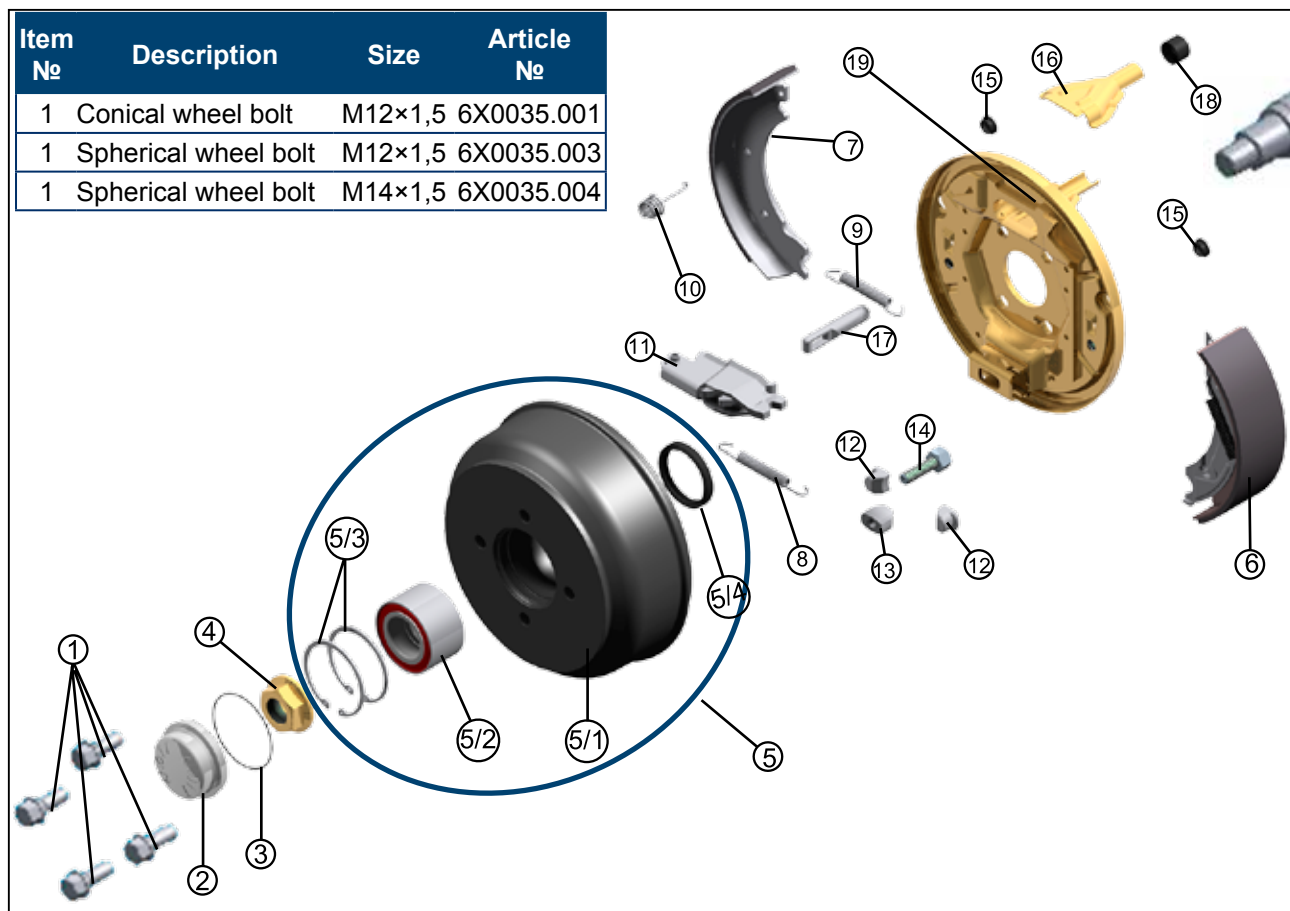


Washing nuts



Washing nozzle

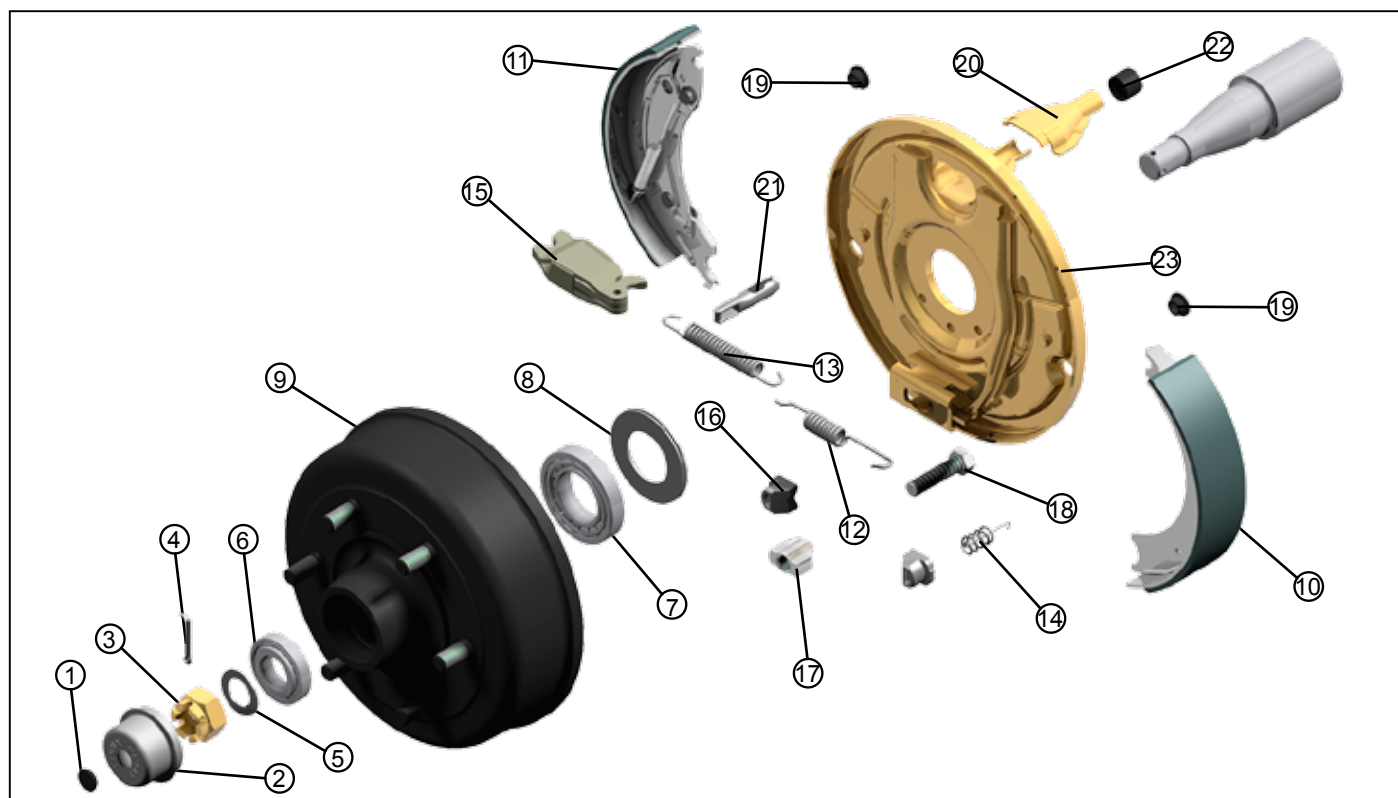
SPARE PARTS FOR WHEEL BRAKE (with compact bearing)



Item No	Description	Article number			
		F160	F200	F200ET0	F250
1	Conical wheel bolt	6X0035.001	6X0035.001	6X0035.001	6X0035.001
2	Dust cap	6B1832C002	6B1832C002	6B1831C002	6B1831C002
3	O-ring	6X0034.001	6X0034.001	6X0034.003	6X0034.003
4	Flanged nut	6B0053.001	6B0053.001	6B0053.001	6B0053.001
5	Brake drum kit incl. 5/1 - 5/4	6A2266	6A2265	6A2582	6B0046
5/1	Brake drum	6A2266	6A2267	6A2582	6B0046
5/2	Compact bearing	6X0500.009	6X0500.009	6X0500.007	6X0500.007
5/3	Circlip	6X0472.054	6X0472.054	6X0472.059	6X0472.059
5/4	Simmering	6S0063.001	6S0063.001	6S0064.001	6S0064.001
6	Brake shoe (Backmat) (reversing)	6X0023.001	6X0023.002	6X0023.002	6X0023.006
7	Brake shoe (normal)	6X0022.001	6X0022.002	6X0022.002	6X0022.006
8	Tension spring (lower)	6X0024.001	6X0644.001	6X0644.001	6X0024.003
9	Tension spring (upper)	6X0024.001	6X0644.003	6X0644.003	6X0024.004
10	Compression spring	6X0098.001	6X0644.002	6X0644.002	6X0098.001
11	Complete expander	6X0107.001	6X0107.002	6X0107.002	6X0107.002
12	Adjustment shoe posts	6X0036.001	6X0036.001	6X0036.001	6X0036.002
13	Readjustment wedge	6X0099.001	6X0099.001	6X0099.001	6X0099.002
14	Hexagonal head screw	6X0759.001	6X0759.001	6X0759.001	6X0759.002
15	Releasing cap	6X0866.001	6X0866.001	6X0866.001	6X0866.002
16	Half Shell	6X0046.005	6X0046.005	6X0046.005	6X0046.005
17	Eyelet	6X0041.001	6X0041.001	6X0041.001	6X0041.001
18	Protective sleeve	6X0046.001	6X0046.001	6X0046.001	6X0046.001
19	Brake backplate (left)	6X0083.002	6X0086.003	6X0086.003	6X0679.001
19	Brake backplate (right)	6X0083.001	6X0086.004	6X0086.004	6X0679.002



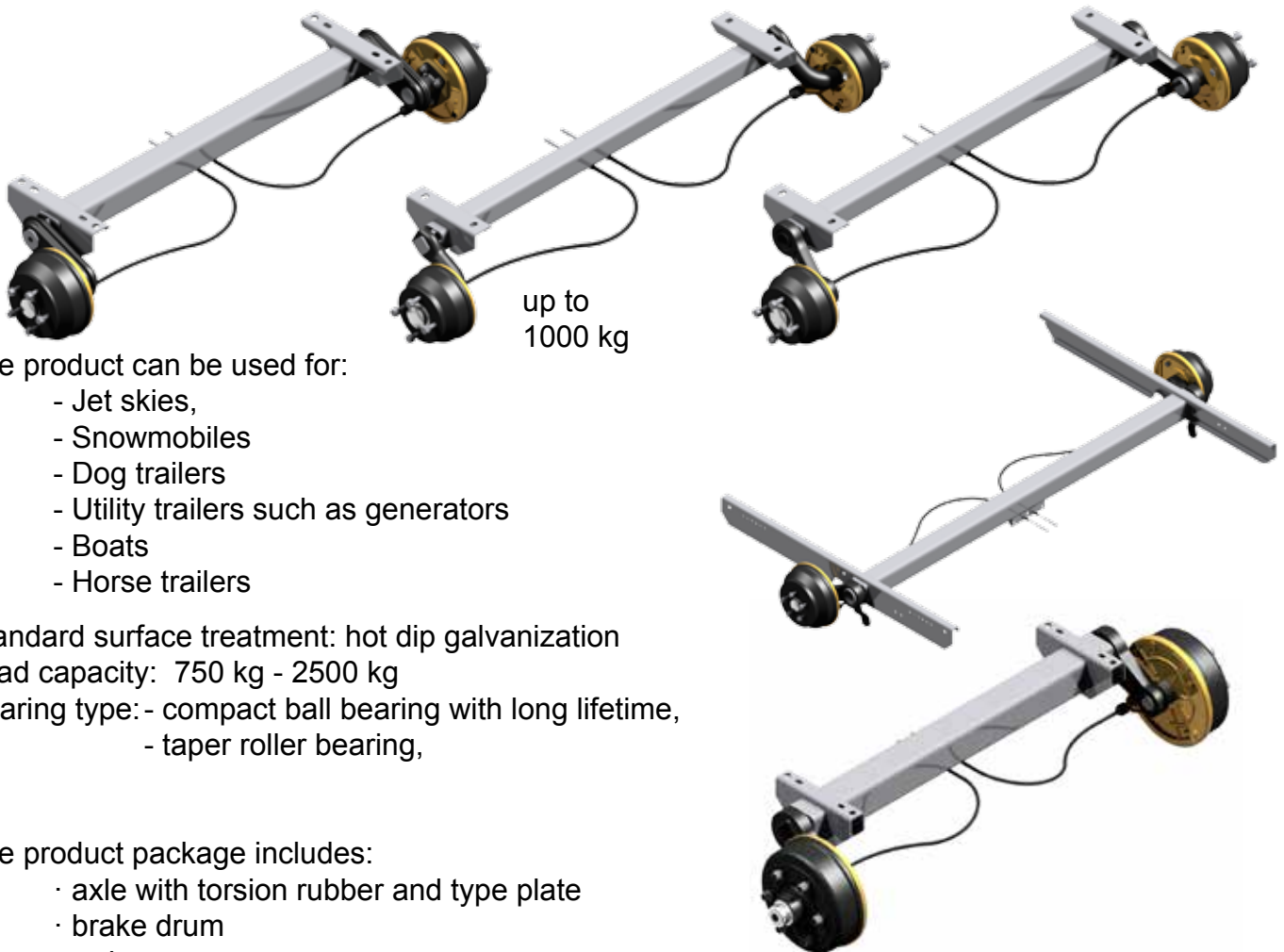
SPARE PARTS FOR WHEEL BRAKE (with taper roller bearing)



Item №	Description	Article number	
		F250ET10	F300
1	Protective plug	---	6B5663.001
2	Dust cap	6B1831C024	6B3446.001
3	Flanged nut	6X0935.019	6X0935.018
4	Cotter pin	6X0094.038	6X0094.050
5	Steel washer	---	6X0032.004
6	Conical bearing	6X0500.011	6X0500.064
7	Conical bearing	6X0500.064	6X0500.065
8	Dust protector ring	41562	6X0927.002
9	Brake drum kit	6B7714	6A2137
10	Brake shoe (normal)	6X0023.002	6X0023.004
11	Brake shoe (Backmat) (reversing)	6X0022.002	6X0022.004
12	Tension spring (lower)	6X0024.003	6X0644.006
13	Tension spring (upper)	6X0024.004	6X0644.007
14	Compression spring	6X0098.001	6X0098.001
15	Complete expander	6X0107.002	6X0107.002
16	Adjustment shoe posts	6X0036.002	6X0036.002
17	Readjustment wedge	6X0099.002	6X0099.002
18	Hexagonal head screw	6X0759.002	
19	Releasing cap		
20	Half Shell	6X0046.005	6X0046.005
21	Eyelet	6X0041.001	6X0041.001
22	Protective sleeve	6X0769.018	6X0679.001
23	Brake backplate (left)	6X0679.004	6X1081.002
23	Brake backplate (right)	6X0679.005	6X1081.001

RUBBER SUSPENSION AXLE WITH AUTO-REVERSE DRUM BRAKE

Load capacity up to 2500 kg



The product can be used for:

- Jet skis,
- Snowmobiles
- Dog trailers
- Utility trailers such as generators
- Boats
- Horse trailers

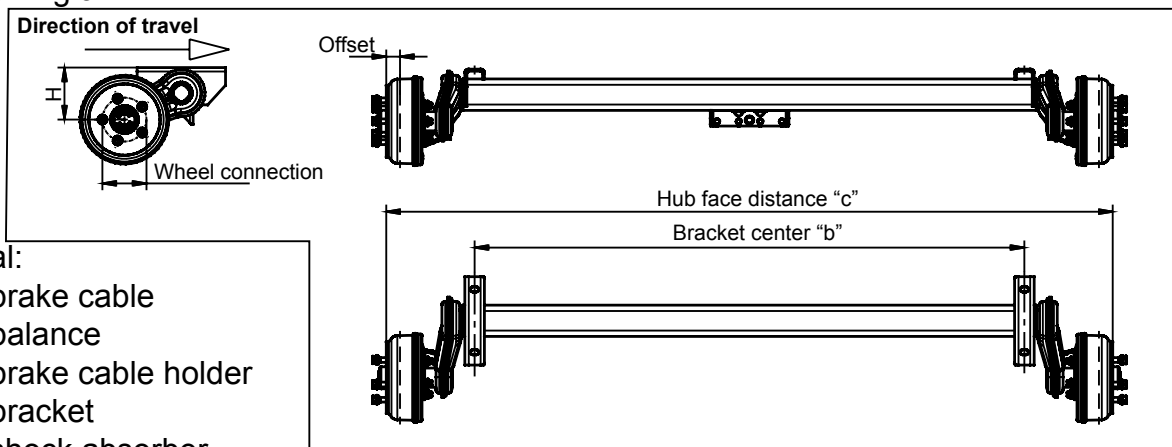
Standard surface treatment: hot dip galvanization

Load capacity: 750 kg - 2500 kg

Bearing type: - compact ball bearing with long lifetime,
- taper roller bearing,

The product package includes:

- axle with torsion rubber and type plate
- brake drum
- swing arm



Additional:

- brake cable
- balance
- brake cable holder
- bracket
- shock absorber
- self-adjusting brake for 200, 250 and 300 brakes

If you are interested in our product, please give the following parameters

to our sales personnel to enable us to choose the best version for you suited to your needs:

- H, c, b size,
- Load capacity,
- Wheel connection,
- Offset



RUBBER SUSPENSION BENDED AXLE WITH AUTO-REVERSE DRUM BRAKE

Load capacity up to 1800 kg

Product can be used for :
boat trailers

Surface treatment:
hot-dip galvanization

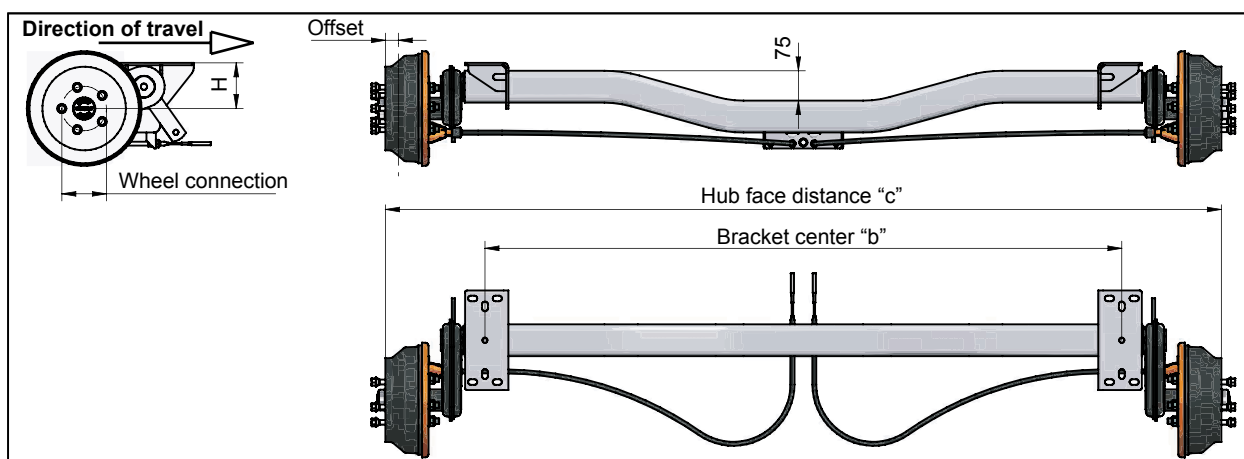
Load capacity: 750 - 1800 kg

Bearing type: - compact ball bearing with long lifetime,
- conical bearing



Advantages:

The new design allows easier the transportation of boats and other vehicles.
The lower centre of gravity makes it more stable.



If you are interested in our product, please give the following parameters to our sales personnel to enable us to choose the best version for you suited to your needs:

- H, c, b size,
- Load capacity,
- Wheel connection,
- Offset

RUBBER SUSPENSION TANDEM AXLE WITH AUTO-REVERSE DRUM BRAKE

Load capacity up to 3500 kg

Product can be used for:

- utility trailers
- horse trailers

Standard surface treatment: hot-dip galvanization

Load capacity: 1500 kg - 3500 kg

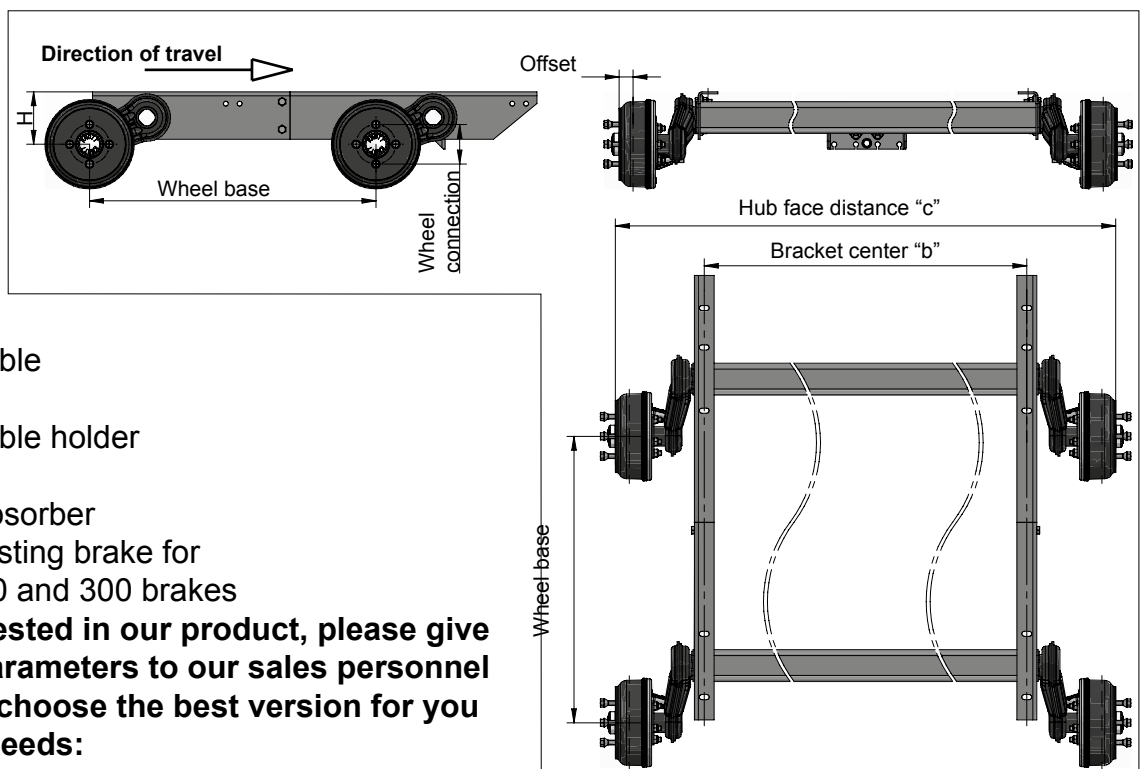
Bearing type: - compact ball bearing with long lifetime,
- taper roller bearing,

Includes:

- axle with torsion rubber and type plate
- brake drum
- swing arm

Mounting types:

- welded
- bolted



Additional parts:

- brake cable
- balance
- brake cable holder
- bracket
- shock absorber
- self-adjusting brake for 200, 250 and 300 brakes

If you are interested in our product, please give the following parameters to our sales personnel to enable us to choose the best version for you suited to your needs:

- H, c, b size, Load capacity, Wheel connection, Offset, Wheel base



SAFETY, COMFORT, SIMPLE AND EASY TO MAINTENANCE



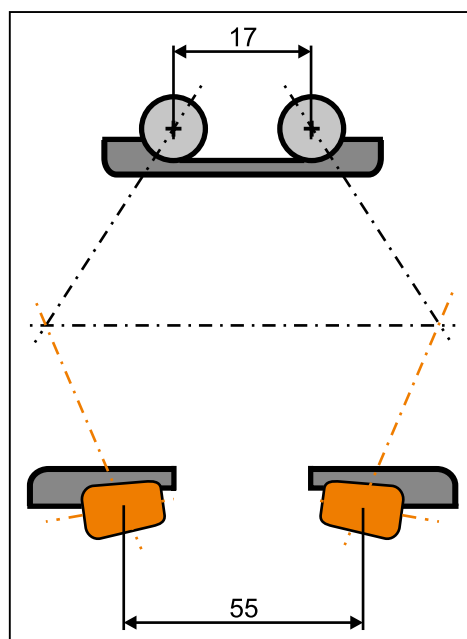
- 1. Replacing the wheel or the brake** can be done within a couple of minutes.
There are only 4 or 5 nuts to be loosened and the whole wheel can be removed together with the brake and the bearing
- 2. Camber and toe-in positioning in factory conditions**
- 3. Protection against corrosion even in extreme circumstances**
 - Completely galvanized brake
 - High endurance
 - Clear visibility of the brake linings
- 4. The bearing of the wheel is protected against contamination and water**
The bearing is treated with special lubricant and is maintenance-free for its entire lifetime.
- 5. Bowden cable connection system**
Without disassembling it, a brake cable is attached to the brake mechanism
- 6. Self-locking axle nut**
A torque of 280 Nm ensures the proper position of the bearing

DOUBLE ROW ANGULAR BEARING



Heavy duty, maintenance free, water resistant bearings with double row are applied in the axle series production.

In connection with the mechanical characteristics, the influence line of angular bearing with ball-row distance of 17mms, is equivalent to two pieces of taper roller bearings with a roller distance of 55mm.



BALANCE BAR

New balance bar kit for single axle



Mounting kit for
old version of brake cables
with hexagon nut
410335.001

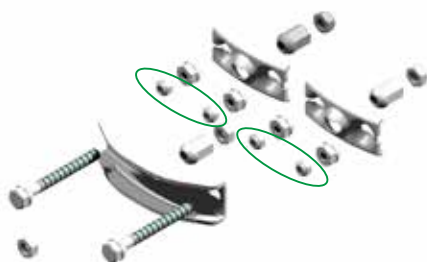


Mounting kit for
old version of brake cables
with self-locking hexagon nut
409905.001



New balance bar mounting kit
for new brake cables
409904.001

New balance bar kit for tandem axle



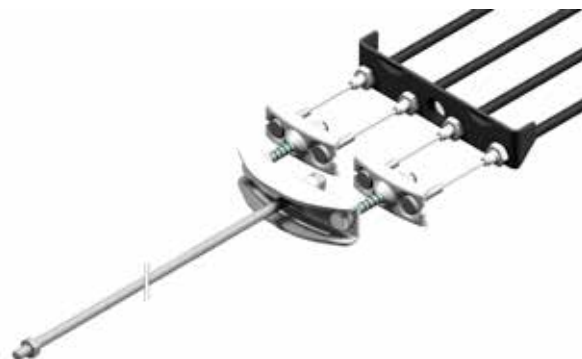
New balance bar kit
for tandem axle
with self-locking hexagon nut
409907.001



New balance bar kit
for tandem axle
409906.001

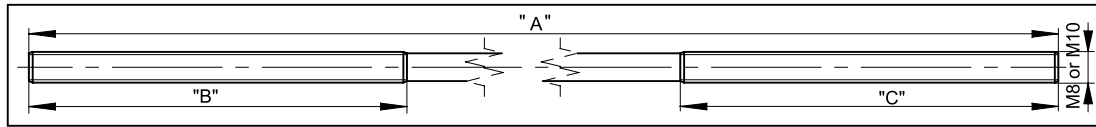


An example for mounting the old version
of brake cables for tandem axle



An example for mounting the new version
of brake cables for tandem axle

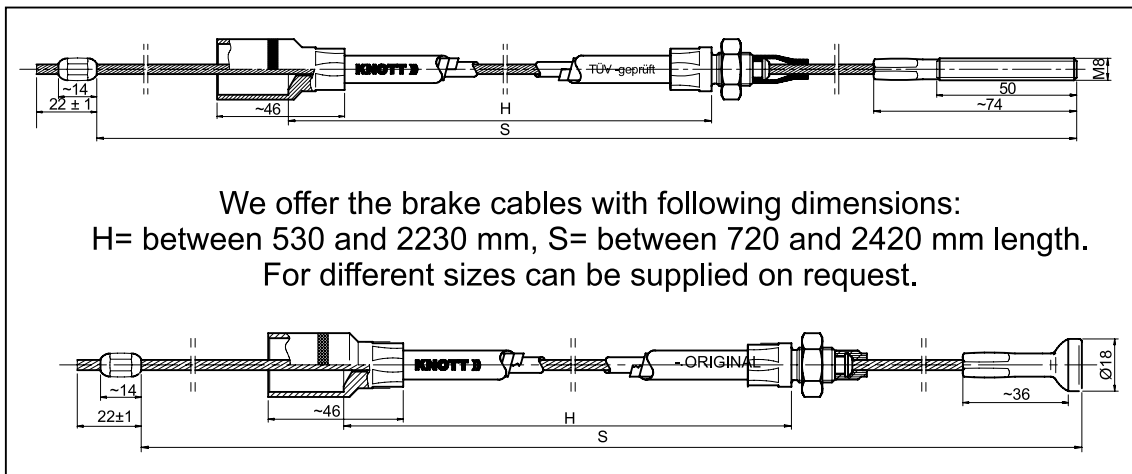
BRAKE ROD, BOWDEN CABLE



We offer the brake rods with following dimensions: A= between 400 and 2000 mm, B= 50 mm, C= between 50 and 300 mm length. Drawing number: 6B1842.
Different sizes can be supplied on request.



Standard trailer brake cable



We offer the brake cables with following dimensions:
H= between 530 and 2230 mm, S= between 720 and 2420 mm length.
For different sizes can be supplied on request.



Stainless steel trailer brake cable

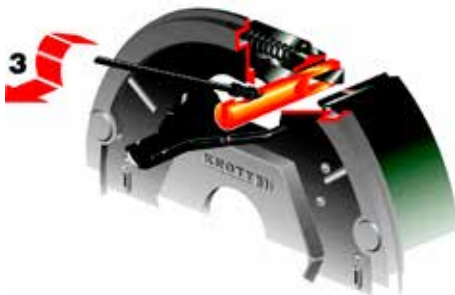


The stainless steel cable is made of corrosion resistant steel, threaded end and sleeve are treated with a high corrosion protection for use in extreme conditions.

SIMPLE INSTALLATION OF BRAKE CABLE



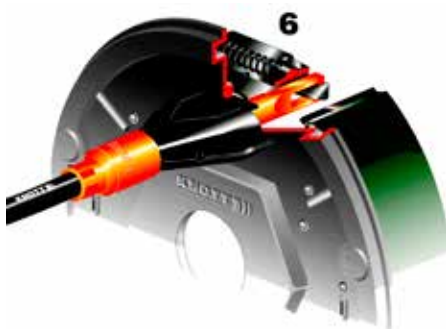
1. Remove the protective cover
2. Lift the upper part of the cable bracket



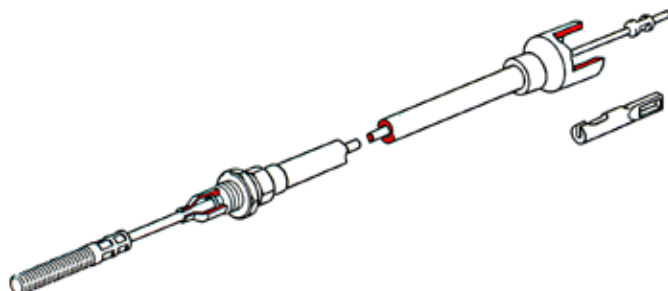
3. Connect the end of the brake cable



4. Close the cable bracket cover
5. Move the cover of the cable forward



6. The brake mechanism is ready for use.



- We introduce new to our range - stainless steel brake cable with zinc-nickel plated end terminals.
- The introduction of zinc-nickel finish replaces zinc which increases the resistance to the oxidation process.
- In contrast to the inner cable of the standard versions, the construction of the stainless steel inner cable has a significantly greater efficiency and life time as proven by our salt spray laboratory testing, which accelerates the corrosion process.
- Additionally, in order to obtain the highest quality and durability of the inner stainless cable it is lubricated with grease which reduces friction with the outer cable.
- KNOTT stainless steel brake cables with zinc-nickel plating guarantees the highest quality, durability and comfort.

Flange - Flange „c”	H	S	Order number
1450	730	920	980207.06
1550	730	920	980207.06
1650	730	920	980207.06
1750	830	1020	980207.07
1850	830	1020	980207.07
1950	1030	1220	980207.11
2050	1030	1220	980207.11
2150	1030	1220	980207.11
2250	1230	1420	980207.14
2350	1230	1420	980207.14



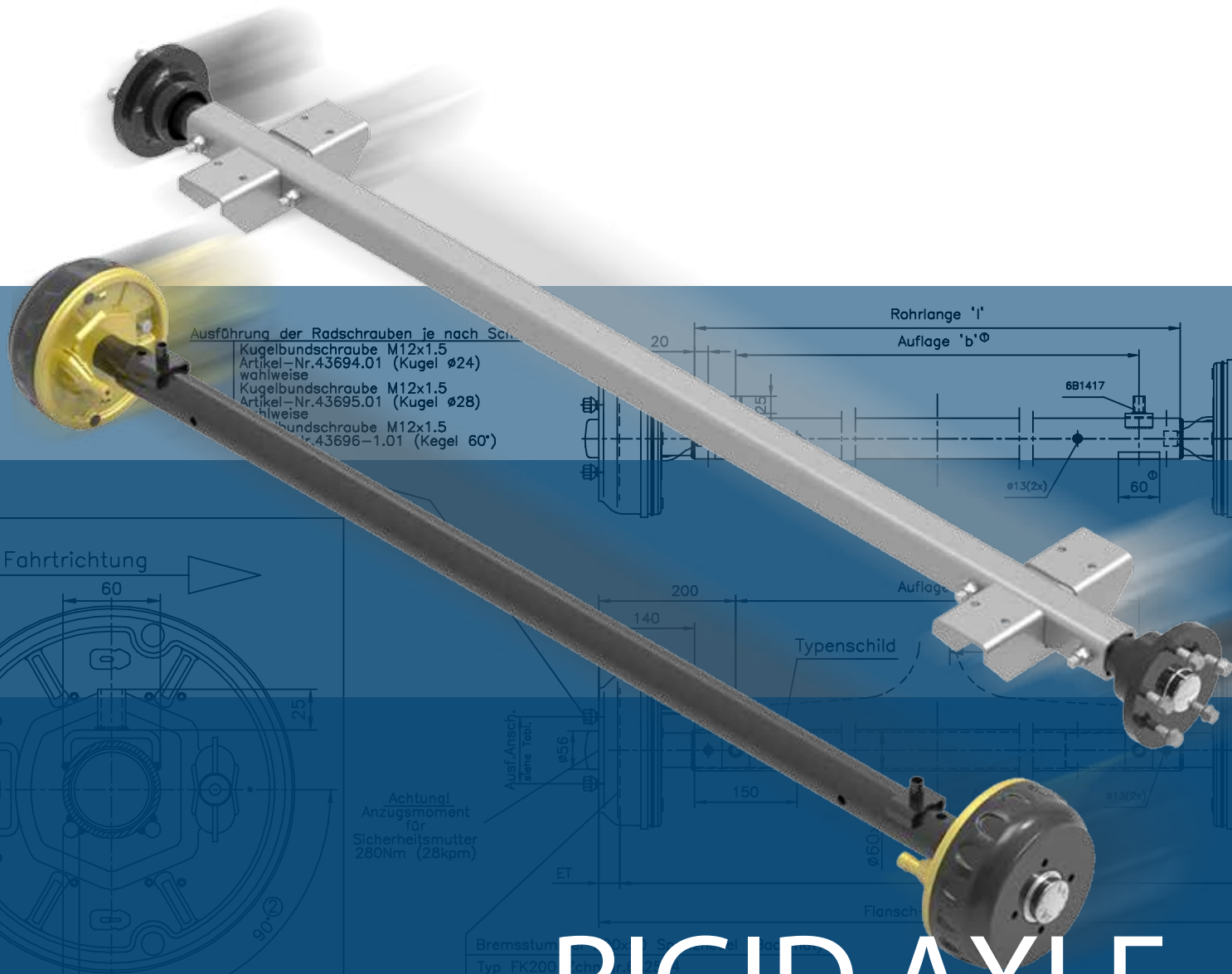
© KNOTT MARKETING KPL

Autóflex-KNOTT Kft.

 H-6000 Kecskemét
 Kadafalva-Heliport

 Tel.: (+36)76/481-515
 Fax: (+36)76/481-494

 email: info@autoflex.hu
www.autoflex.hu



RIGID AXLE

ET 26–35 mm

Zul.Achslast: 400–750kg

Bremsstumpen FK200
Typ FK200
Typbezeichnung
EG-Prüfprotokoll
Achslast max. 750 kg
bei tandem 2x750 max. 1500 kg

Dear Sirs

Holidays are wonderful and enjoyable times, with caravanning being one of the best ways to spend them. Unfortunately, the caravan can be very heavy and maneuvering them in a campsite is not easy. To remove the stress and physical strain we introduce innovative devices to aid you positioning your trailer – the easydriver pro and easydriver basic.

The new easydriver caravan mover will help you move your single or double-axle caravan more easily. With our new easydriver pro and easydriver basic caravan moving device, maneuvering even in tight areas, or in situations that require a lot of force, the easydriver makes moving your caravan easy. Soft start facility allows for a gentle pull away, adjusting to maneuver around even the tightest bends. In the caravan park or at home —for a safe grip, even on steep slopes.



easydriver pro

easydriver basic



- Powerful drive for any application.
- New, intuitive easydriver operation (even under difficult conditions and on steep slopes).
- Simply light, smart and compact.
- Lowest system weight with MPP (in combination with the Mobility Power Pack lithium/ion system upto 27 kg less weight).
- Very small turning radius.
- Engages electrically at the press of a button (with the easydriver pro).
- Unique engaging mechanism for optimal power transfer.
- Radio remote control for all functions with status feedback.
- Best traction for safe negotiation of slopes, wet grass, mud and rough terrain.
- Gentle pulling away and stopping with Softstart and Softstop.



UNBRAKED RIGID AXLE

Load capacity up to 1800 kg

Product can be used for:

- utility trailers

Standard surface treatment: hot-dip galvanization, painting

Load capacity: 500 kg - 1800 kg

Axle body type:

- tube
- square tube

Bearing type: - compact ball bearing with long lifetime,
- taper roller bearing,

Includes:

- axle with type plate
- hub or drum brake

New design!

Solid axle with additional protector cup

It protects the seal against stones and debris in a harsh environment.

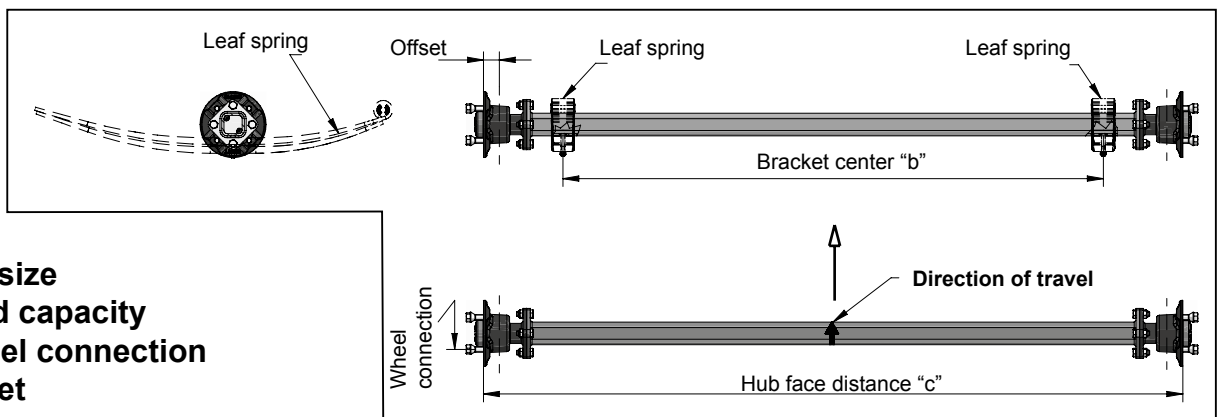
Additional:

- leaf spring
- shock absorber
- protector cup



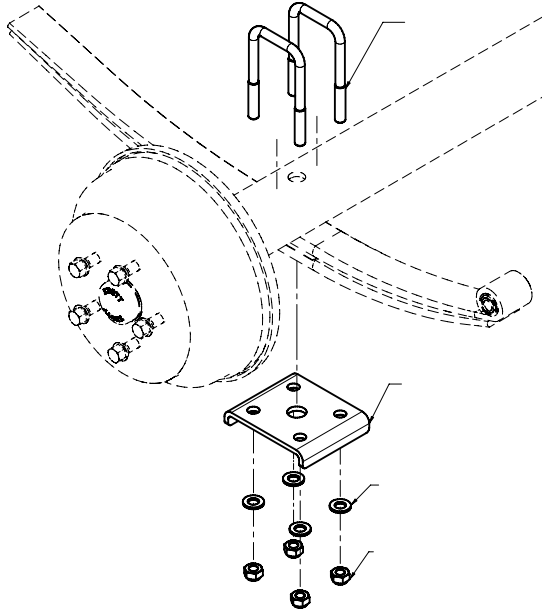
If you are interested in our product,
please give the following parameters to our sales personnel
to enable us to choose the best version for you suited to your needs:

- c, b size
- Load capacity
- Wheel connection
- Offset



RIGID AXLE WITH AUTO-REVERSE DRUM BRAKE

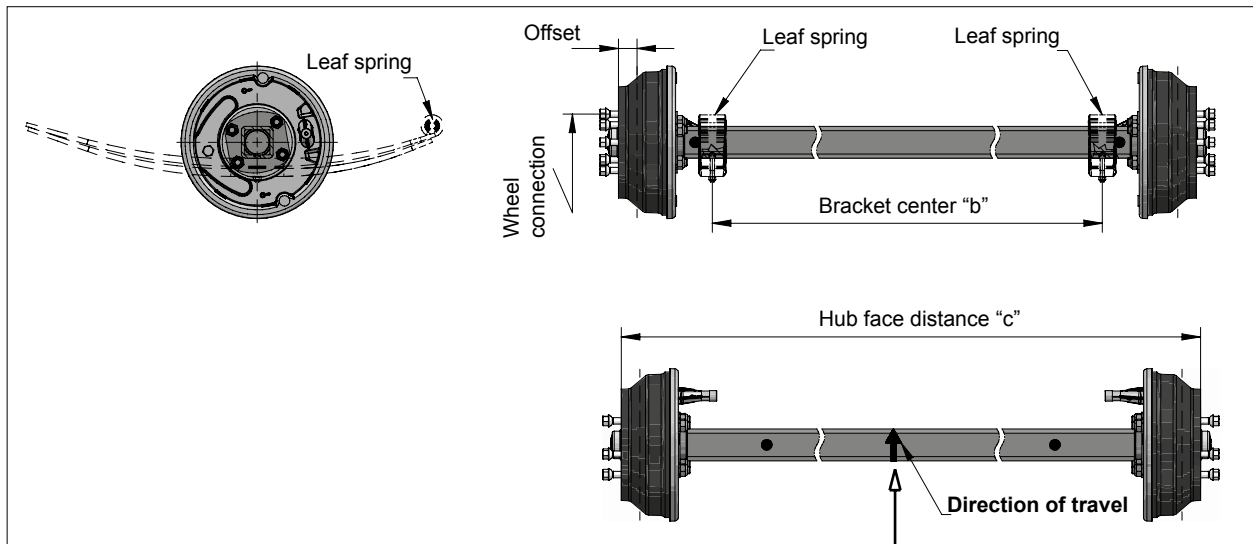
Load capacity up to 1800 kg



Mounting of the leaf spring



For more sizes and info please contact our sales personnel!

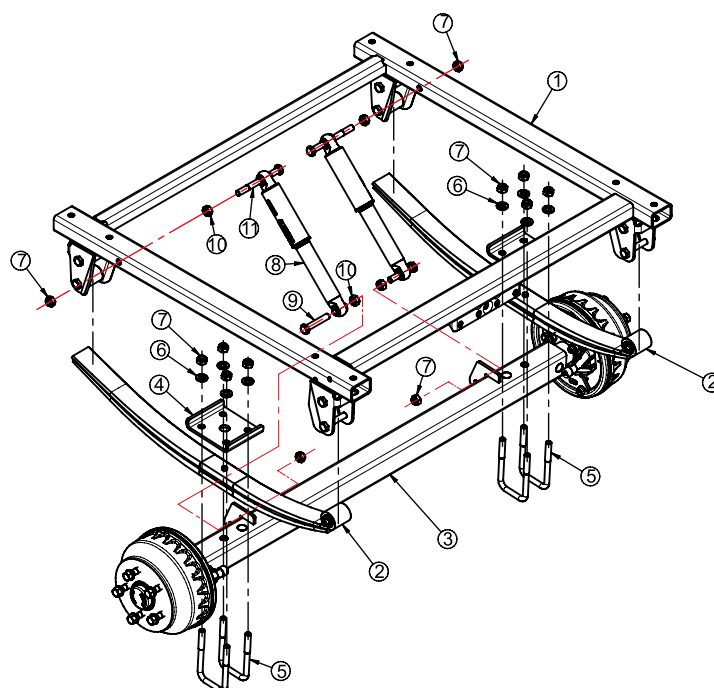


LEAF SPRING

Nº	Pcs	Spare part name
1	1	Frame kpl.
2	2	Leaf-spring
3	1	Axle cpl.
4	2	Bolt-on element
5	4	U-Bolt
6	8	Washer
7	12	Hex lock nut
8	2	Shock absorber
9	2	Hex. bolt
10	4	Hexagon nut
11	2	Hex. bolt



Mounting of the leaf spring



U-Bolt

Use for fixing:
axles, mudguards,
rollers, glide bunk,
winches, jacks,
other trailer part elements.



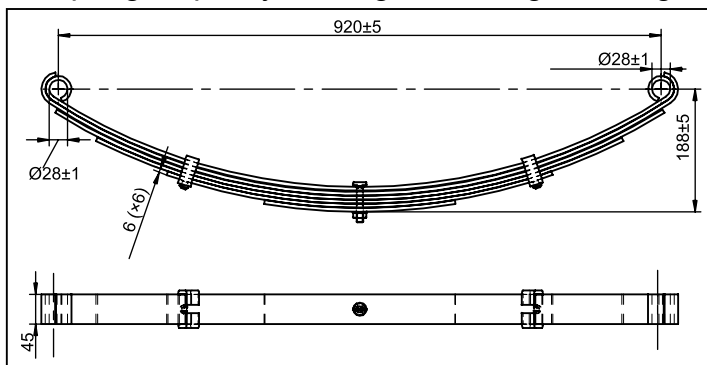
Article number	H (mm)	B (mm)	Article number	H (mm)	B (mm)
6X1126.001	110	52	6X1126.022	120	100
6X1126.002	120	52	6X1126.023	150	90
6X1126.003	130	52	6X1126.024	120	82
6X1126.004	150	52	6X1126.025	140	60
6X1126.005	170	52	6X1126.026	90	40
6X1126.006	110	42	6X1126.027	80	60
6X1126.007	130	42	6X1126.028	170	60
6X1126.008	150	42	6X1126.029	160	41
6X1126.009	120	60	6X1126.030	140	106
6X1126.010	120	40	6X1126.031	180	41
6X1126.011	150	60	6X1126.032	115	61
6X1126.012	150	100	6X1126.033	80	86
6X1126.013	150	80	6X1126.034	140	42
6X1126.014	90	60	6X1126.035	140	53
6X1126.015	150	120	6X1126.036	80	74
6X1126.016	90	80	6X1126.037	70	62
6X1126.017	140	70	6X1126.038	105	62
6X1126.018	70	80	6X1126.039	70	86
6X1126.019	140	40	6X1126.040	170	42
6X1126.020	105	100	6X1126.041	130	106
6X1126.021	100	100	6X1126.042	145	56

LEAF SPRING FOR RIGID AXLES

6X1356.001



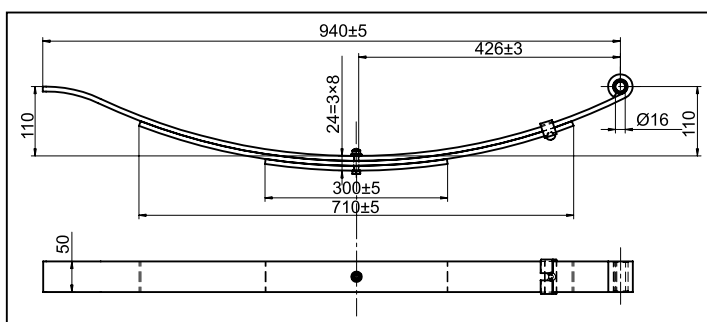
Double-eye leaf-spring (6 mm leaf 6 pcs)
Spring Capacity 375 Kg Self weight: 11 Kg



6X1356.004



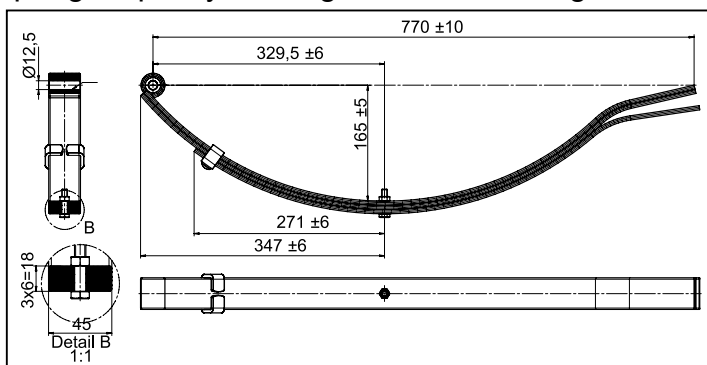
Open-eye leaf-spring with flat end (8 mm leaf 3 pcs)
Spring Capacity 375 Kg Self weight: 6,6 Kg



6X1356.010



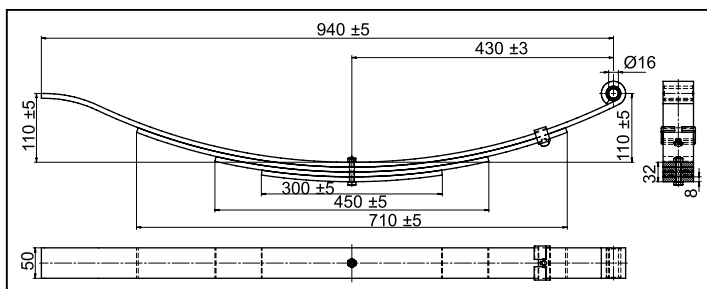
Open-eye leaf-spring with flat end (6 mm leaf 3 pcs)
Spring Capacity 375 Kg Self weight: 5,6 Kg



6X1356.009

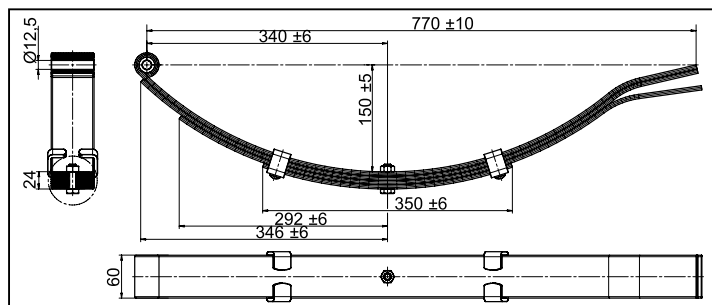


Open-eye leaf-spring with flat end (8 mm leaf 4 pcs)
Spring Capacity 450 Kg Self weight: 8 Kg



LEAF SPRING FOR RIGID AXLES

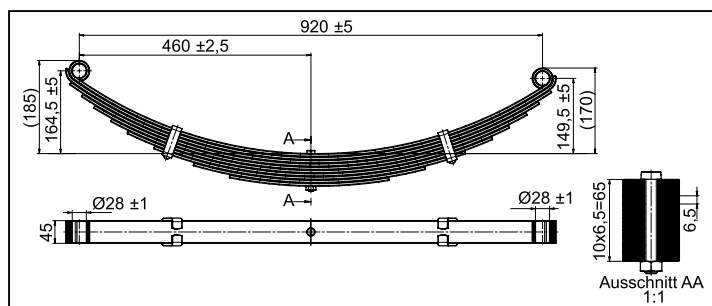
Open-eye leaf-spring with flat end (6 mm leaf 4 pcs)
Spring Capacity 450 Kg Self weight: 8,5 Kg



6X1356.011



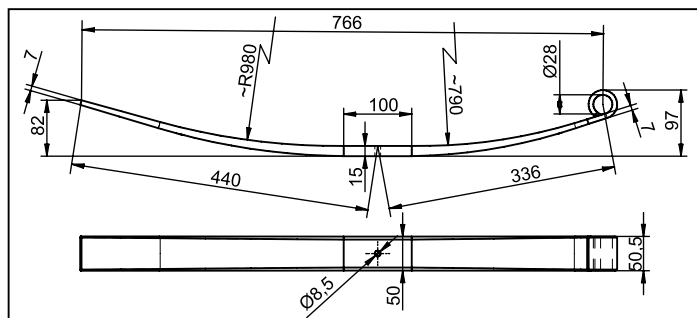
Double-eye leaf-spring (6,5 mm leaf 10 pcs)
Spring Capacity 900 Kg Self weight: 18,8 Kg



6X1356.006



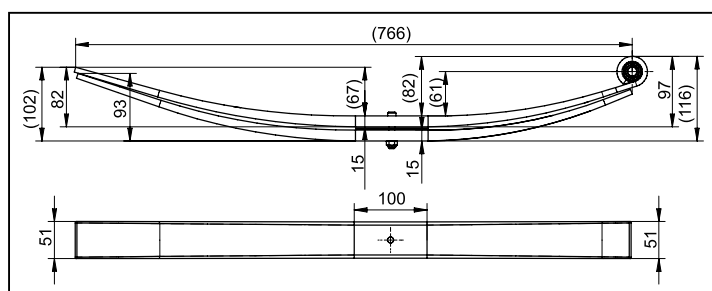
Open-eye parabolic leaf-spring with flat end
(7 mm to 15 mm leaf 1 pc)
Spring Capacity 500 Kg Self weight: 3,7 Kg



6B4699.001



Open-eye parabolic leaf-spring with flat end
(7 mm to 15 mm leaf 2 pcs)
Spring Capacity 900 Kg Self weight: 7,3 Kg



6B4590.001



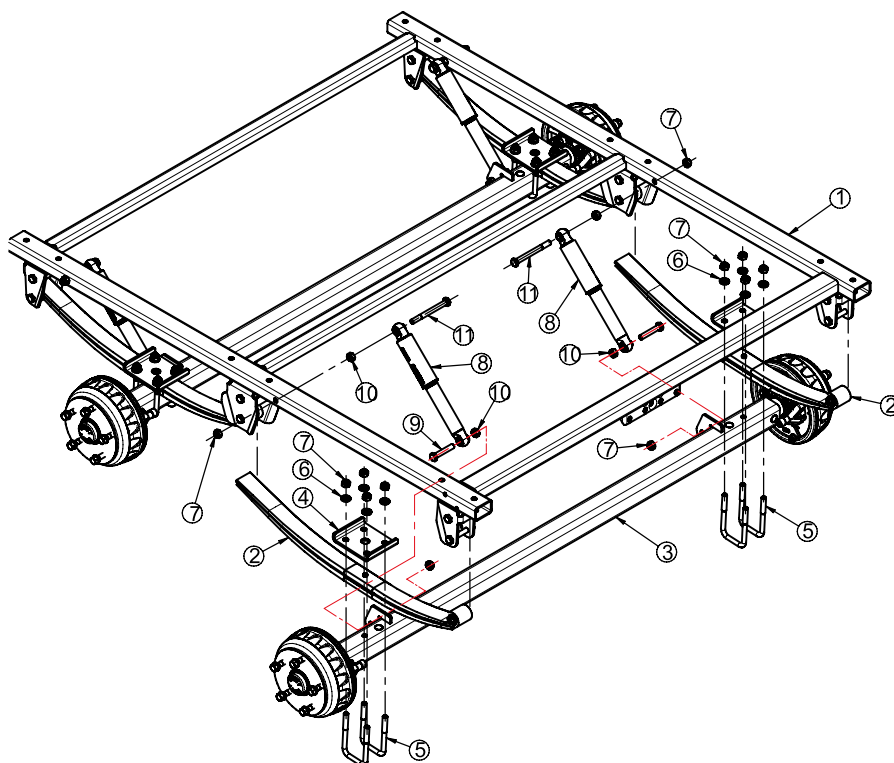
MOUNTING OPTION

No	Pcs	Spare part name
1	1	Frame kpl.
2	4	Leaf-spring
3	2	Axle cpl.
4	4	Bolt-on element
5	8	U-Bolt
6	16	Washer
7	24	Hex lock nut
8	4	Shock absorber
9	4	Hex. bolt
10	8	Hexagon nut
11	4	Hex. bolt

Rubber buffer


6BB471.001

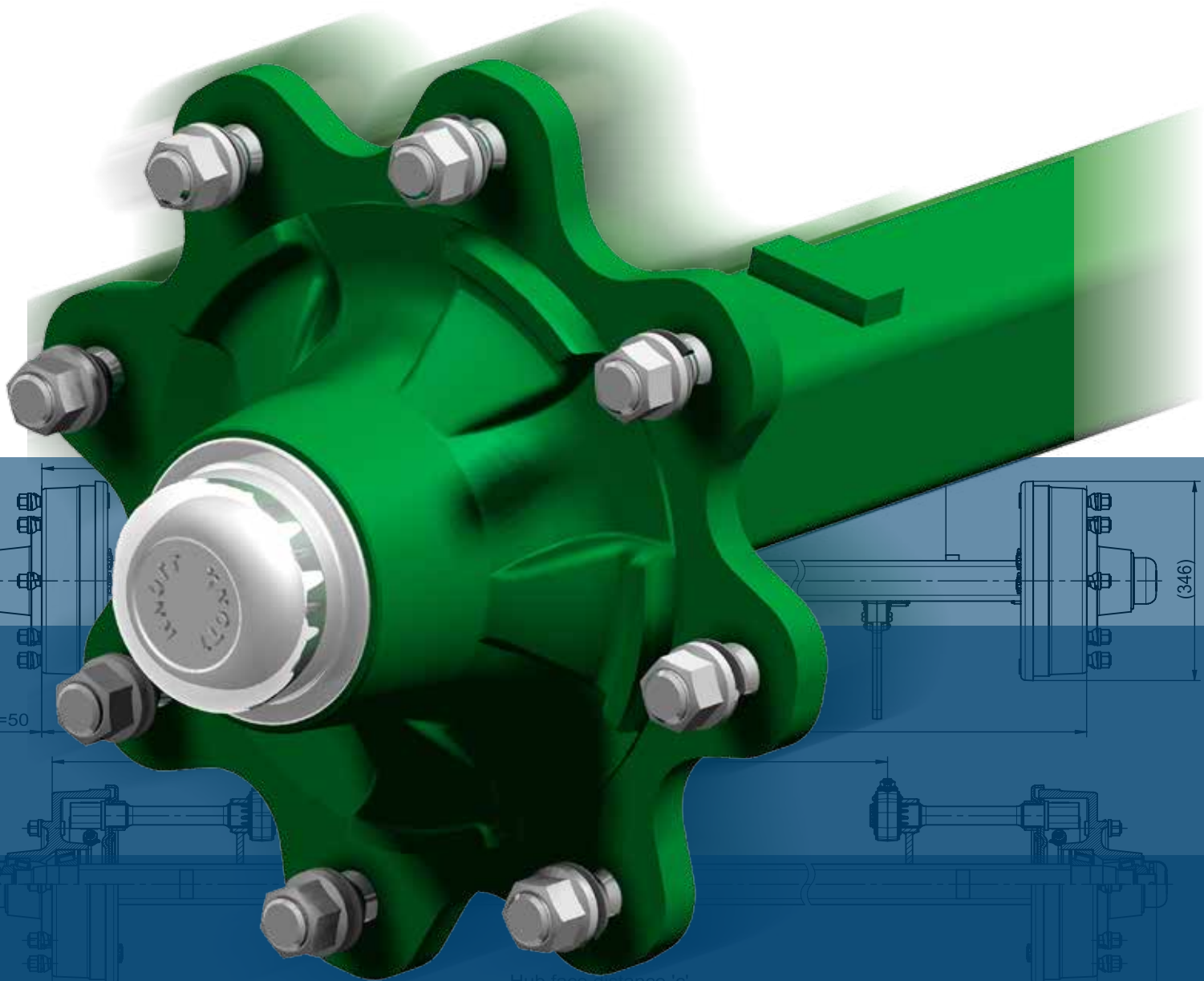
Mounting of the leaf spring



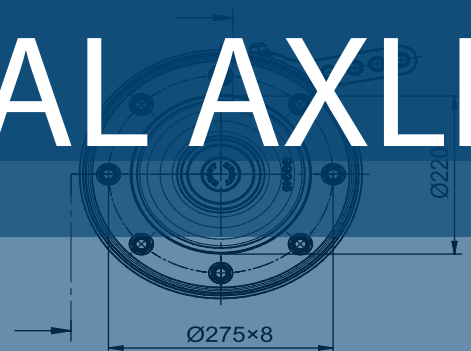
The leaf springs can be overslung (placed over the axle) or underslung (placed under the axle). Either way, the U-bolts fit around the axle and secure to a metal plate that rests against the leaf springs.

POSSIBLE MOUNTING OPTION

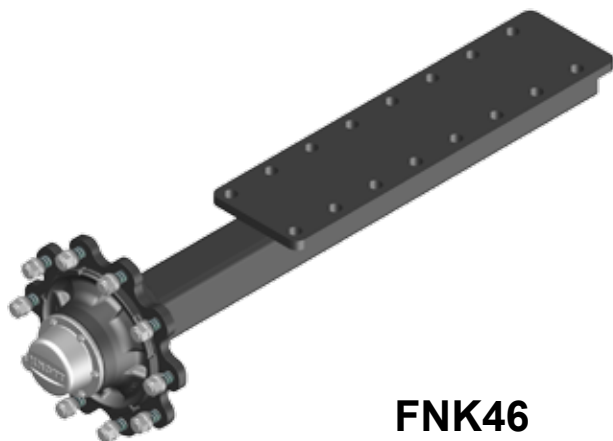




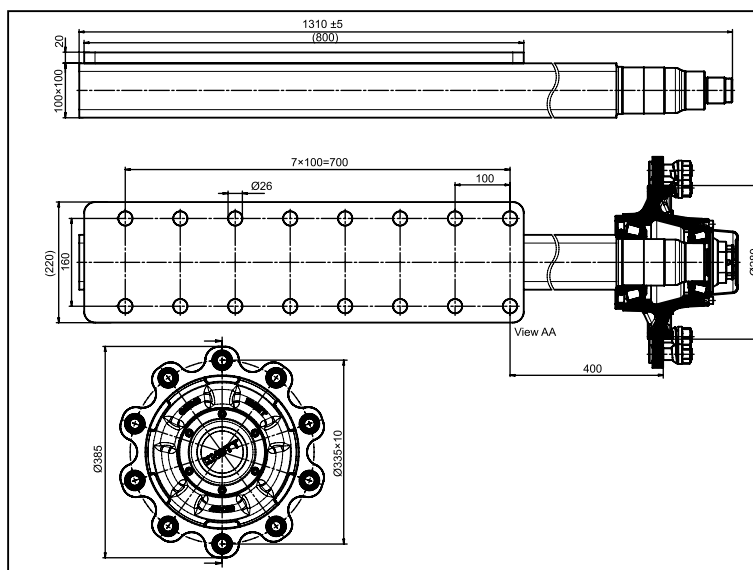
AGRICULTURAL AXLE



UNBRAKED HALF-AXLE FOR AGRICULTURAL RIGID AXLES



FNK46

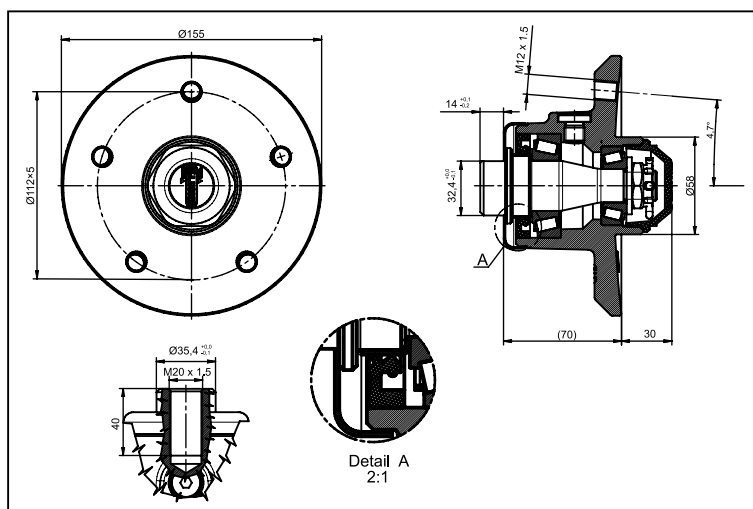


Type	40 km/h			ET	PCD	Center hole (mm)
FNK63	825	975	725	0	140x5	94
FNK45	1350	1600	1200	0	205x6	160
FNK62	1750	2050	1500	0	205x6	160
FNK47	2000	2500	1750	0	205x6	160
FNK61	3250	3750	3000	0	205x6	160
FNK44	3350	3700	3000	0	275x8	220
FNK59	3850	4200	3500	0	205x6	160
FNK60	4000	4500	3750	0	275x8	220
FNK46	5500	6250	4750	0	335x10	280
FNK64		3500			205x6	160
FNK65		6000			229x6	160

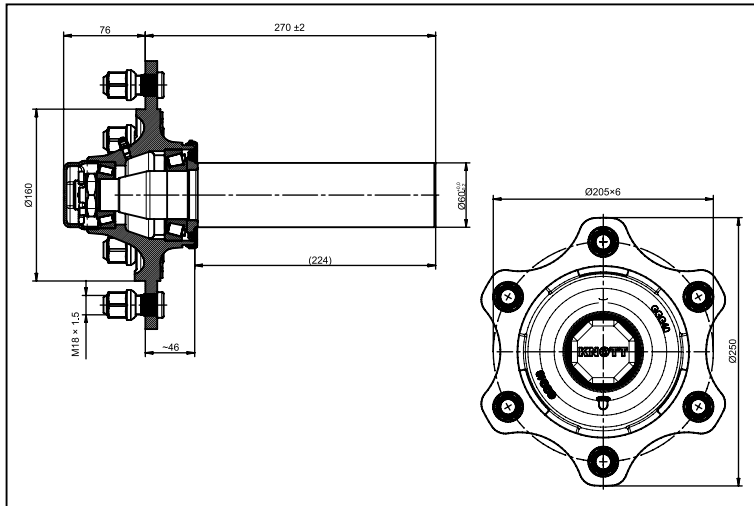
UNBRAKED HUB AND STUB FOR AGRICULTURAL RIGID AXLES



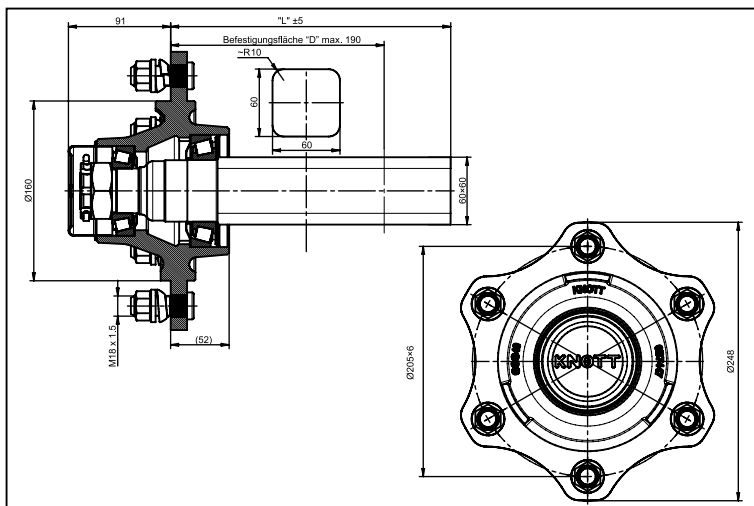
FNK66



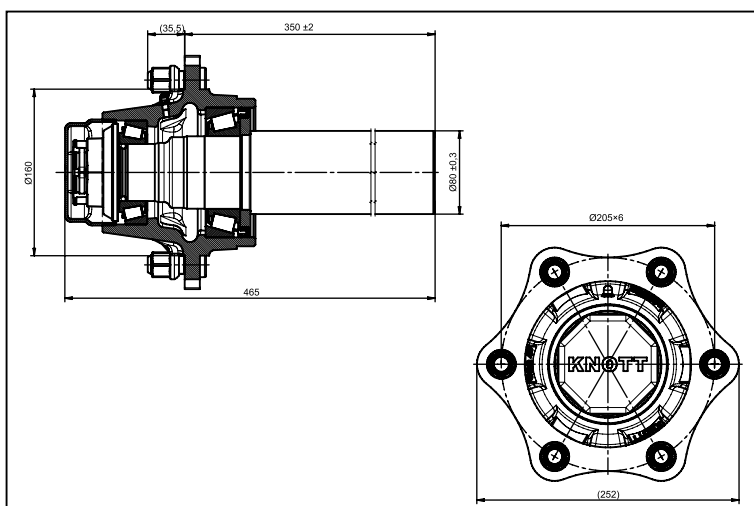
UNBRAKED HUB AND STUB FOR AGRICULTURAL RIGID AXLES



FNK45



FNK47



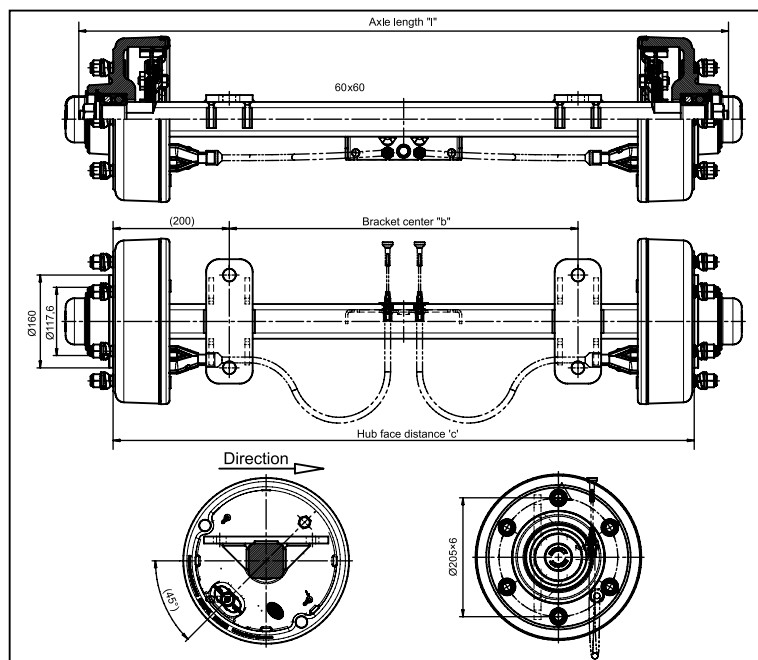
FNK59

RIGID AXLES FOR AGRICULTURAL MACHINERY



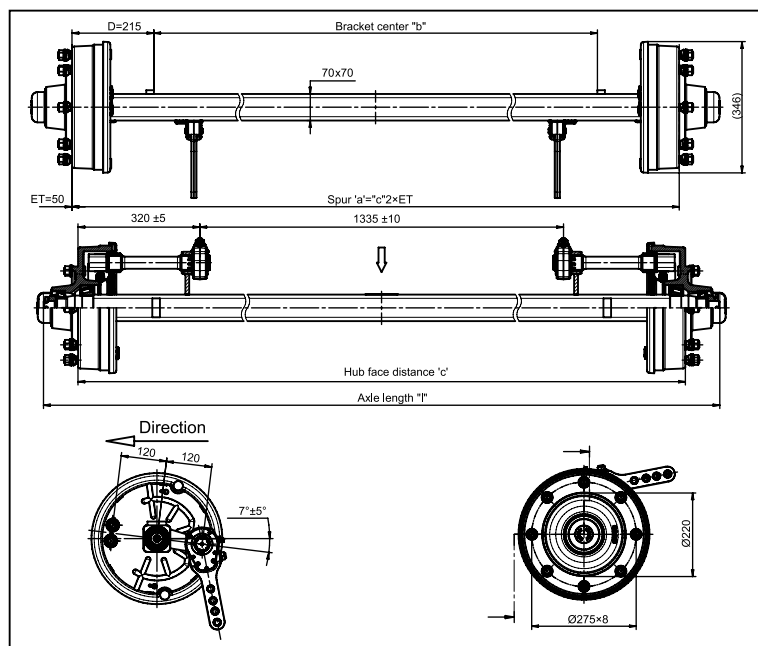
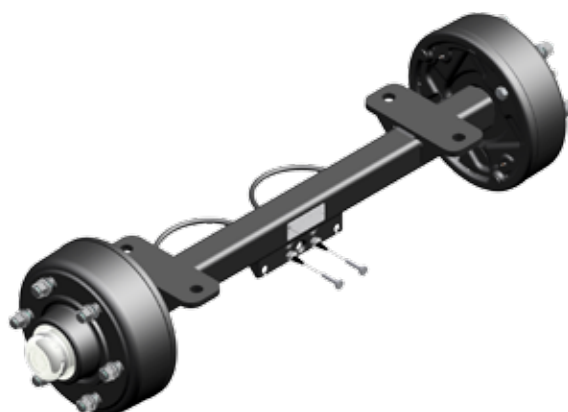
Slack adjuster


BRAKED AXLE FOR AGRICULTURAL MACHINERY



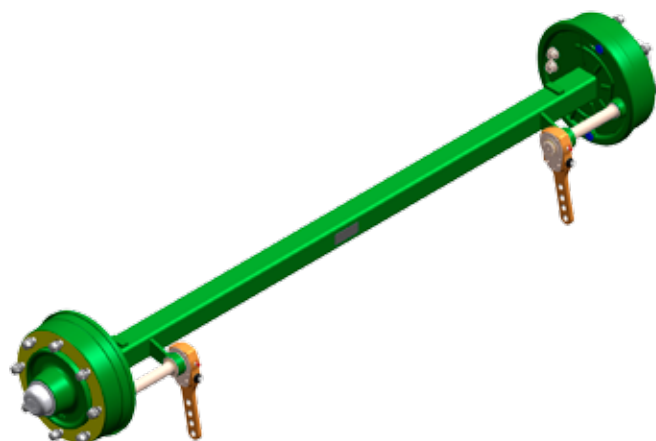
VRB37 Speed: Load capacity:
 40 Km/h 3700 Kg

Axle	Type:	VRB27 200
Drawing №:	6AC342	Article №: 6AC342.001
Brake:	250×40	Brake control: spread lever
Brake type:	25-2025	Status:
Certification:	361-007-94	Greasing nipple: none
Automatic reverse control:	Backmat	PCD: 205×6
Center hole:	Ø160 mm	



VRB37 Speed: Load capacity:
 40 Km/h 3700 Kg

Axle	Type:	VRB37 215
Drawing №:	6AA949	Article №: 6AA949.001
Brake:	300×60	Brake control: CAM, N
Brake type:	30-4305	Status:
Certification:	361-047-12	Greasing nipple: none
Automatic reverse control:	none	PCD: 275×8
Center hole:	Ø220 mm	



Dear Sirs,

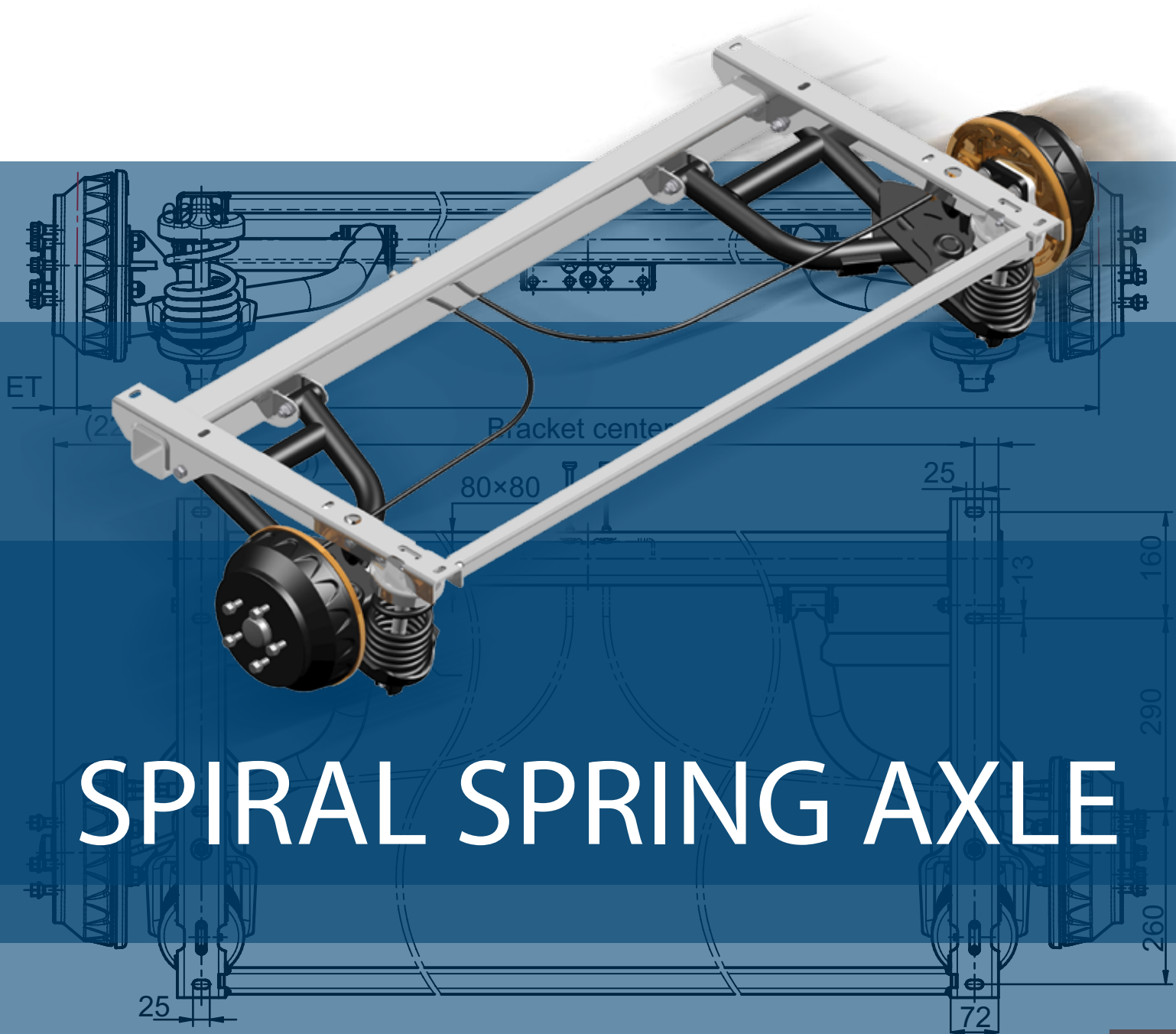
No doubt everyone will agree with the statement that safe behavior on the road is an absolute priority. To improve the lateral visibility of the trailer we have designed an innovative wheel reflector, which is mounted on to the grease cap of the hub. This significantly increases the visibility of the trailer to other road users.



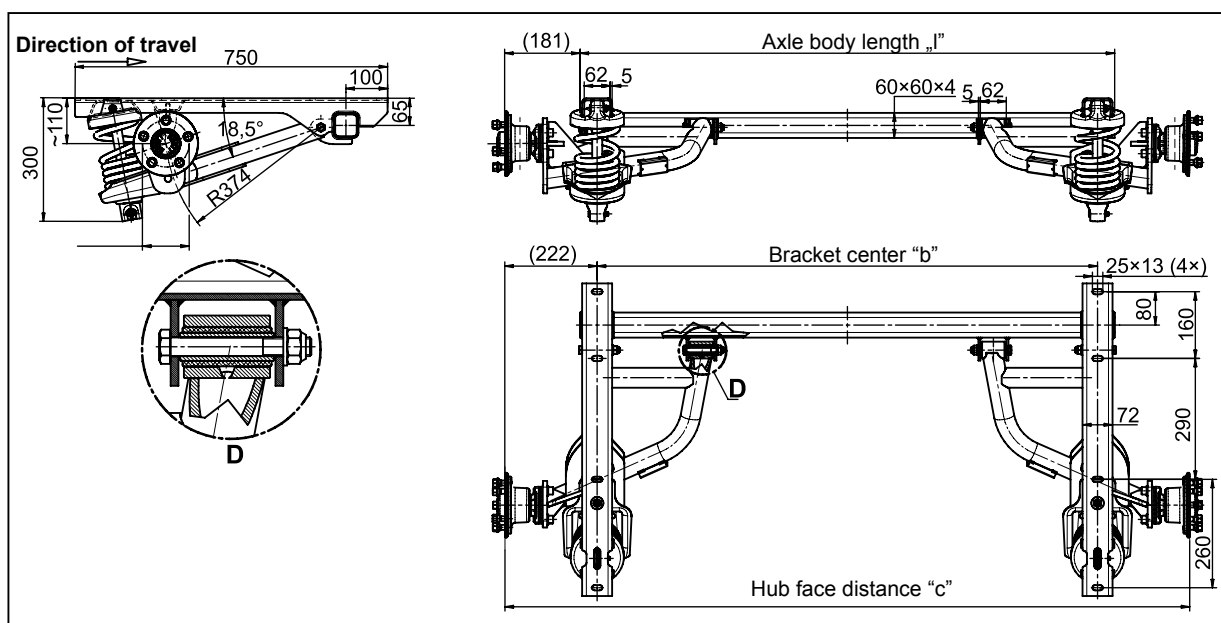
We propose the Wheel reflectors to increase road safety:

- easy mounted with a new type of hub cap (see KNOTT Newsletter 19.2016),
- made of reflective foil certificated to ECE R104 Class C,
- ensure the optimum protection of wheel bolts,
- made of durable plastic.





UNBRAKED AXLE WITH SPIRAL SPRING



- Type: SG13-L
- ET: 26-35 mm
- Load capacity: 1350 kg
- Above 25 km/h

"C" (mm)	"b" (mm)	"l" (mm)	Offset (mm)	Article number
1644	1200	1282	Ø112x5	6AB899.001
1544	1100	1182	Ø112x5	6AB899.002
1444	1000	1082	Ø139,7x6	6AB899.003
1544	1100	11820	Ø139,7x6	6AB899.004

For more information please contact our sales personnel!
These axles are available according to inquiry.
More variants are available. Please ask our sales personnel for actual drawings!



BRAKED AXLE WITH SPIRAL SPRING

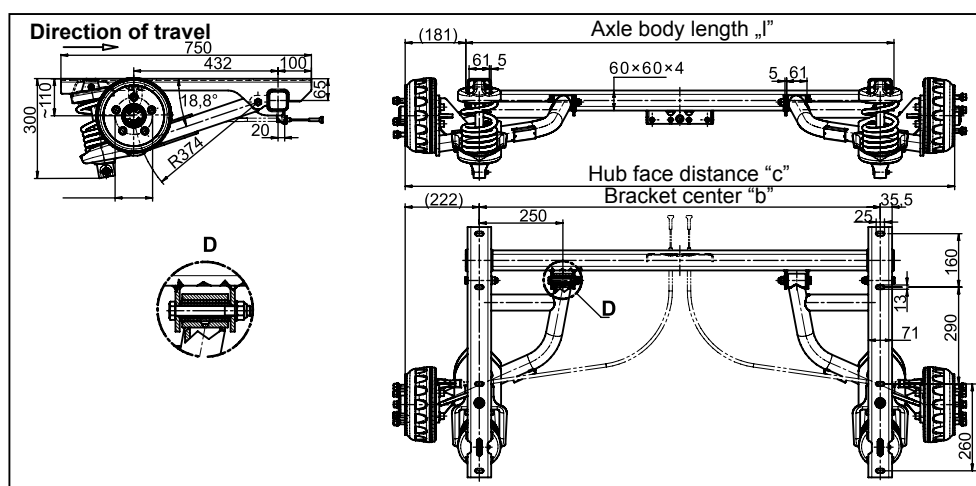
SGB13



SGB15

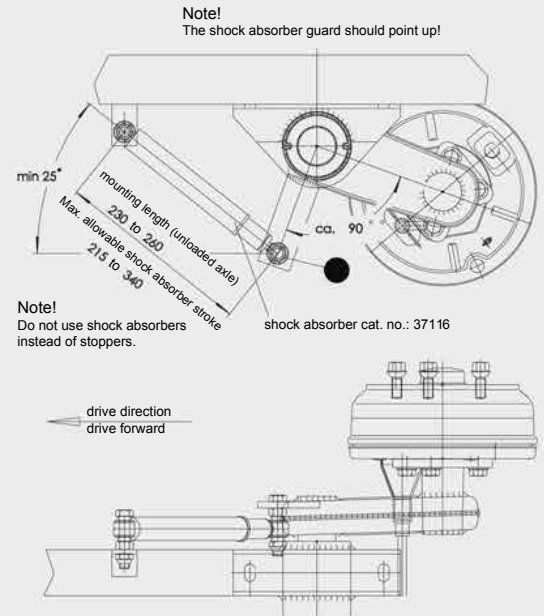
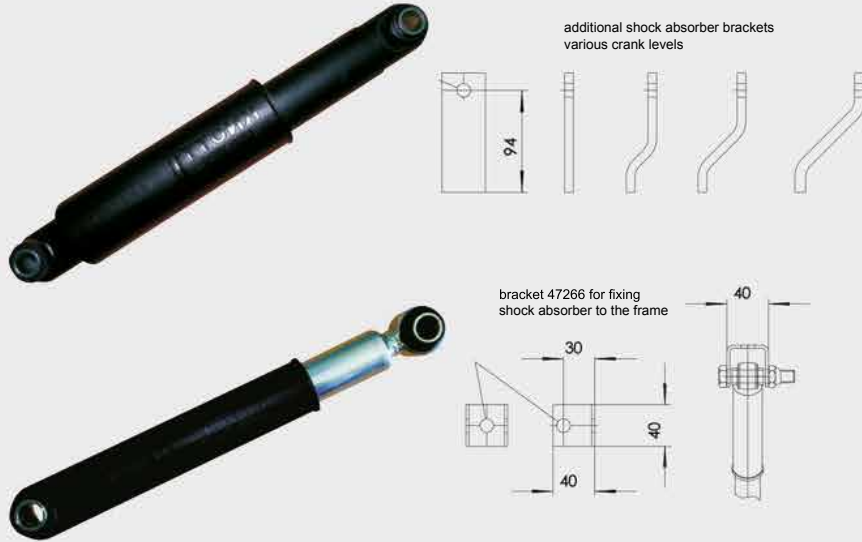



SGB18



Type	Load capacity (kg)	"c" (mm)	"b" (mm)	"l" (mm)	"x" (mm)	Offset (mm)	ET (mm)	Article number
SGB13-L	1350	1644	1200	1282		Ø112×5	26 - 35	6AB302.001
SGB15-MV	1500	2146	1670	1752	1598	Ø112×5	0 - 45	6AC212.001
SGB18-MV	1800	1844	1400	1482	1331	Ø112×5	26 - 35	6AB612.001

- Shock absorbers mounted on the bracket and frame are designed to improve drive comfort by absorbing vibrations from the suspension system.
- Below is the method of mounting to the frame, installation length and maximum allowable stroke of the multi-purpose shock absorber.



- The shock absorbers available in our product offering come in multi-purpose and pneumatic versions featuring different rigidity, which translates into different driving characteristics.
 - Because of their different parameters, our shock absorbers can meet all sorts of customer requirements.
 - For optimum performance, shock absorbers should be installed inclined at approximately 25 degrees to the drive direction.
 - Standard Knott axles can be easily provided with a bracket to facilitate the installation of shock absorbers.
 - As standard, shock absorbers are mounted in front of the axle; however, we also offer “inverted” shock absorbers, on special orders, to be mounted behind the axle.
- 
- Two shock absorbers are shown on the right side of the image. The one in the foreground is red with a black lower section and is angled downwards. Behind it is a green one, also angled. Both have metal mounting brackets at the top and bottom.



Autóflex-Knott Kft.
Kecskemét, Kadafalva - Heliport
Tel.: +36 76 481515
Fax: +36 76 481494
info@autoflex.hu
www.autoflex.hu

KNOTT GMBH
Gutenberg str. 21. / D-93128 Regenstauf
Tel.: +49 9402 93170
Fax: +49 9402 931796
de1@knott-group.com
www.knott.de